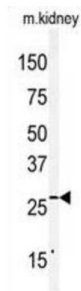


Claudin 2 (CLDN2) Antibody

Catalogue No.: abx032794



Members of the claudin protein family, such as CLDN2, are expressed in an organ-specific manner and regulate the tissue-specific physiologic properties of tight junctions.

Target: Claudin 2 (CLDN2)**Clonality:** Polyclonal**Reactivity:** Human**Tested Applications:** ELISA, WB**Host:** Rabbit**Recommended dilutions:** WB: 1/1000. Optimal dilutions/concentrations should be determined by the end user.**Conjugation:** Unconjugated**Immunogen:** KLH-conjugated synthetic peptide between 190-220 amino acids from the C-terminal region of human Claudin 2 (CLDN2).**Isotype:** IgG**Form:** Liquid**Purification:** Purified through a protein A column, followed by peptide affinity purification.**Storage:** Aliquot and store at -20°C. Avoid repeated freeze/thaw cycles.**UniProt Primary AC:** P57739 ([UniProt](#), [ExpASY](#))**KEGG:** hsa:9075

Datasheet

Version: 2.0.0
Revision date: 06 Mar 2025



String: [9606.ENSF00000441283](#)

Molecular Weight: Calculated MW: 24.5 kDa

Buffer: PBS containing 0.09% sodium azide.

Note: THIS PRODUCT IS FOR RESEARCH USE ONLY. NOT FOR USE IN DIAGNOSTIC, THERAPEUTIC OR COSMETIC PROCEDURES. NOT FOR HUMAN OR ANIMAL CONSUMPTION.

For Reference Only