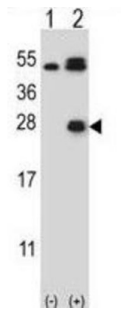
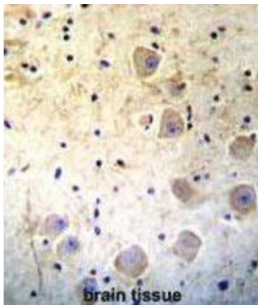
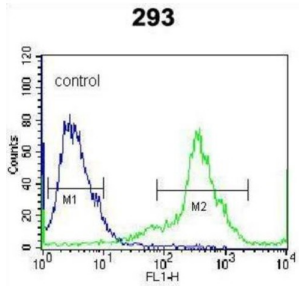


Kallikrein 6 (KLK6) Antibody

Catalogue No.: abx032801



Kallikreins are a subgroup of serine proteases having diverse physiological functions. Growing evidence suggests that many kallikreins are implicated in carcinogenesis and some have potential as novel cancer and other disease biomarkers. The KLK6 enzyme is regulated by steroid hormones. In tissue culture, the enzyme has been found to generate amyloidogenic fragments from the amyloid precursor protein, suggesting a potential for involvement in Alzheimer's disease.

- Target:** Kallikrein 6 (KLK6)
- Clonality:** Polyclonal
- Reactivity:** Human
- Tested Applications:** ELISA, WB, IHC, FCM
- Host:** Rabbit

Recommended dilutions: WB: 1/1000, IHC-P: 1/10 - 1/50, FCM: 1/10 - 1/50. Not tested in IHC-F. Optimal dilutions/concentrations should be determined by the end user.

Datasheet

Version: 3.0.0
Revision date: 06 Oct 2024



Conjugation:	Unconjugated
Immunogen:	KLH-conjugated synthetic peptide between 126-156 amino acids from the Central region of human Kallikrein 6.
Isotype:	IgG
Form:	Liquid
Purification:	Purified Rabbit Polyclonal Antibody.
Storage:	Aliquot and store at -20°C. Avoid repeated freeze/thaw cycles.
UniProt Primary AC:	Q92876 (UniProt , ExPASy)
Molecular Weight:	Calculated MW: 26.9 kDa
Buffer:	PBS containing 0.09% sodium azide.
Note:	This product is for research use only.

For Reference Only