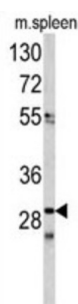
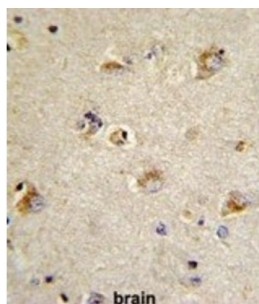
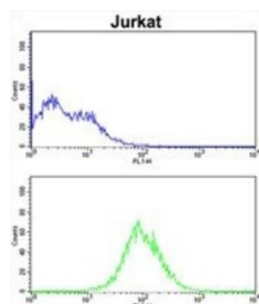


Cell Division Cycle Associated 3 (CDCA3) Antibody

Catalogue No.: abx032898



CDCA3 is a F-box-like protein which is required for entry into mitosis. It acts by participating to E3 ligase complexes that mediate the ubiquitination and degradation of WEE1 kinase at G2/M phase.

Target: Cell Division Cycle Associated 3 (CDCA3)

Clonality: Polyclonal

Reactivity: Human, Mouse

Tested Applications: ELISA, WB, IHC, FCM

Host: Rabbit

Recommended dilutions: WB: 1/1000, IHC-P: 1/50 - 1/100, FCM: 1/10 - 1/50. Not tested in IHC-F. Optimal dilutions/concentrations should be determined by the end user.

Datasheet

Version: 3.0.0
Revision date: 25 Apr 2025



Conjugation:	Unconjugated
Immunogen:	KLH-conjugated synthetic peptide between 41-69 amino acids from the N-terminal region of human CDCA3.
Isotype:	IgG
Form:	Liquid
Purification:	Purified Rabbit Polyclonal Antibody.
Storage:	Aliquot and store at -20°C. Avoid repeated freeze/thaw cycles.
UniProt Primary AC:	Q99618 (UniProt , ExPASy)
KEGG:	hsa:83461
String:	9606.ENSP00000442068
Molecular Weight:	Calculated MW: 29 kDa
Buffer:	PBS containing 0.09% sodium azide.
Note:	THIS PRODUCT IS FOR RESEARCH USE ONLY. NOT FOR USE IN DIAGNOSTIC, THERAPEUTIC OR COSMETIC PROCEDURES. NOT FOR HUMAN OR ANIMAL CONSUMPTION.