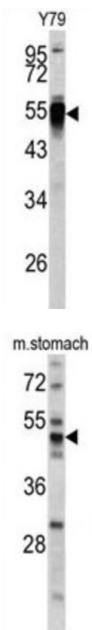
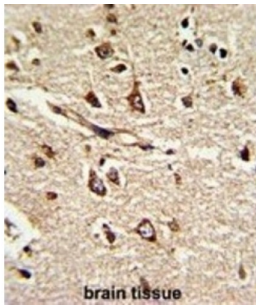


Datasheet

Version: 6.0.0
Revision date: 02 Apr 2025

Protein Disulfide Isomerase A6 (PDIA6) Antibody

Catalogue No.: abx032922



Protein disulfide isomerases (EC 5.3.4.1), such as PDIA6, are endoplasmic reticulum (ER) resident proteins that catalyze formation, reduction, and isomerization of disulfide bonds in proteins and are thought to play a role in folding of disulfide-bonded proteins.

Target: Protein Disulfide Isomerase A6 (PDIA6)

Clonality: Polyclonal

Reactivity: Human, Mouse, Rat

Tested Applications: ELISA, WB, IHC, IF/ICC, FCM

Host: Rabbit

Recommended dilutions: WB: 1/1000, IHC-P: 1/100, IF/ICC: 1/100, FCM: 1/10 - 1/50. Not tested in IHC-F. Optimal dilutions/concentrations should be determined by the end user.

Datasheet

Version: 6.0.0
Revision date: 02 Apr 2025



Conjugation:	Unconjugated
Immunogen:	KLH-conjugated synthetic peptide between 144-172 amino acids from the Central region of human PDIA6.
Isotype:	IgG
Form:	Liquid
Purification:	Purified Rabbit Polyclonal Antibody.
Storage:	Aliquot and store at -20°C. Avoid repeated freeze/thaw cycles.
UniProt Primary AC:	Q15084 (UniProt , ExPASy)
NCBI Accession:	NP_005733.1
KEGG:	hsa:10130
String:	9606.ENSP00000385385
Molecular Weight:	Calculated MW: 48.1 kDa
Buffer:	PBS containing 0.09% sodium azide.
Note:	THIS PRODUCT IS FOR RESEARCH USE ONLY. NOT FOR USE IN DIAGNOSTIC, THERAPEUTIC OR COSMETIC PROCEDURES. NOT FOR HUMAN OR ANIMAL CONSUMPTION.

For Reference Only