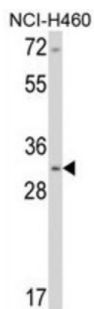
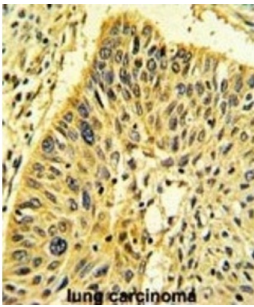
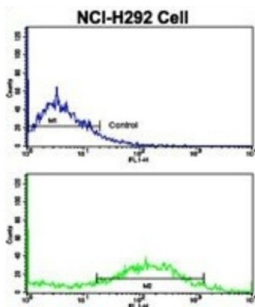


## Calponin 1 (CNN1) Antibody

Catalogue No.: abx032990



Thin filament-associated protein that is implicated in the regulation and modulation of smooth muscle contraction. It is capable of binding to actin, calmodulin, troponin C and tropomyosin. The interaction of calponin with actin inhibits the actomyosin Mg-ATPase activity (By similarity).

<b>Target:</b>	Calponin 1 (CNN1)
<b>Clonality:</b>	Polyclonal
<b>Reactivity:</b>	Human
<b>Tested Applications:</b>	ELISA, WB, IHC, FCM
<b>Host:</b>	Rabbit

**Recommended dilutions:** WB: 1/1000, IHC-P: 1/10 - 1/50, FCM: 1/10 - 1/50. Not tested in IHC-F. Optimal dilutions/concentrations should be determined by the end user.

# Datasheet

Version: 1.0.0  
Revision date: 23 Nov 2024



<b>Conjugation:</b>	Unconjugated
<b>Immunogen:</b>	KLH-conjugated synthetic peptide between 10-39 amino acids from the N-terminal region of human Calponin-1.
<b>Isotype:</b>	IgG
<b>Form:</b>	Liquid
<b>Purification:</b>	Purified Rabbit Polyclonal Antibody.
<b>Storage:</b>	Aliquot and store at -20°C. Avoid repeated freeze/thaw cycles.
<b>UniProt Primary AC:</b>	P51911 ( <a href="#">UniProt</a> , <a href="#">ExPASy</a> )
<b>Gene Symbol:</b>	CNN1
<b>GeneID:</b>	<a href="#">1264</a>
<b>OMIM:</b>	<a href="#">600806</a>
<b>HGNC:</b>	2155
<b>KEGG:</b>	hsa:1264
<b>Ensembl:</b>	ENSG00000130176
<b>String:</b>	<a href="#">9606.ENSP00000252456</a>
<b>Molecular Weight:</b>	Calculated MW: 33.2 kDa
<b>Buffer:</b>	PBS containing 0.09% sodium azide.
<b>Specificity:</b>	Predicted to react with Mouse, Rat, Cow and Sheep CNN1.
<b>Note:</b>	This product is for research use only.