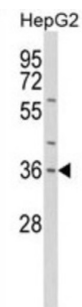
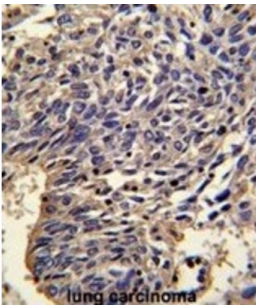
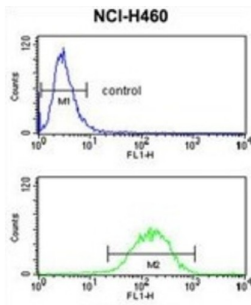


## Interleukin 1 Alpha (IL1A) Antibody

Catalogue No.: abx033027



IL1A is a member of the interleukin 1 cytokine family. This cytokine is a pleiotropic cytokine involved in various immune responses, inflammatory processes, and hematopoiesis. This cytokine is produced by monocytes and macrophages as a proprotein, which is proteolytically processed and released in response to cell injury, and thus induces apoptosis.

**Target:** Interleukin 1 Alpha (IL1A)

**Clonality:** Polyclonal

**Reactivity:** Human

**Tested Applications:** ELISA, WB, IHC, FCM

**Host:** Rabbit

**Recommended dilutions:** WB: 1/2000, IHC-P: 1/500, FCM: 1/25. Not tested in IHC-F. Optimal dilutions/concentrations should be determined by the end user.

# Datasheet

Version: 3.0.0  
Revision date: 05 Jan 2025



<b>Conjugation:</b>	Unconjugated
<b>Immunogen:</b>	KLH-conjugated synthetic peptide between 177-206 amino acids from the Central region of human IL1A.
<b>Isotype:</b>	IgG
<b>Form:</b>	Liquid
<b>Purification:</b>	Purified through a protein A column, followed by peptide affinity purification.
<b>Storage:</b>	Aliquot and store at -20°C. Avoid repeated freeze/thaw cycles.
<b>UniProt Primary AC:</b>	P01583 ( <a href="#">UniProt</a> , <a href="#">ExPASy</a> )
<b>Gene Symbol:</b>	IL1A
<b>KEGG:</b>	hsa:3552
<b>String:</b>	<a href="#">9606.ENSP00000263339</a>
<b>Molecular Weight:</b>	Calculated MW: 30.6 kDa
<b>Buffer:</b>	PBS containing 0.09% sodium azide.
<b>Note:</b>	This product is for research use only.

For Reference Only