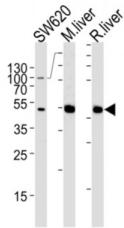
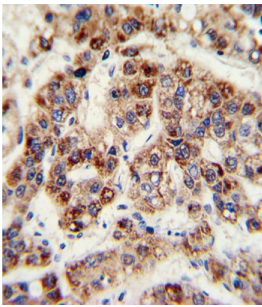
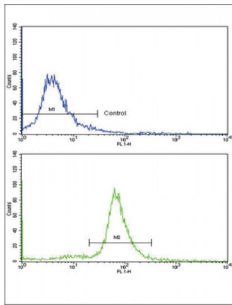


Ornithine Carbamoyltransferase, Mitochondrial (OTC) Antibody

Catalogue No.: abx033070



OTC is a mitochondrial matrix enzyme. Missense, nonsense, and frameshift mutations in this enzyme lead to ornithine transcarbamylase deficiency, which causes hyperammonemia.

Target: Ornithine Carbamoyltransferase, Mitochondrial (OTC)

Clonality: Polyclonal

Reactivity: Human, Mouse, Rat

Tested Applications: ELISA, WB, IHC, FCM

Host: Rabbit

Recommended dilutions: WB: 1/2000, IHC-P: 1/10 - 1/50, FCM: 1/10 - 1/50. Not tested in IHC-F. Optimal dilutions/concentrations should be determined by the end user.

Datasheet

Version: 2.0.0
Revision date: 27 Jul 2024



Conjugation:	Unconjugated
Immunogen:	KLH-conjugated synthetic peptide between 71-98 amino acids from the Central region of human OTC.
Isotype:	IgG
Form:	Liquid
Purification:	Purified through a protein A column, followed by peptide affinity purification.
Storage:	Aliquot and store at -20°C. Avoid repeated freeze/thaw cycles.
UniProt Primary AC:	P00480 (UniProt , ExPASy)
Gene Symbol:	OTC
NCBI Accession:	NP_000522.3
KEGG:	hsa:5009
String:	9606.ENSP00000039007
Molecular Weight:	Calculated MW: 39.9 kDa
Buffer:	PBS containing 0.09% sodium azide.
Specificity:	Predicted to react with Cow, Pig and Sheep OTC.
Note:	This product is for research use only.

For Reference Only