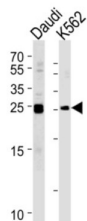
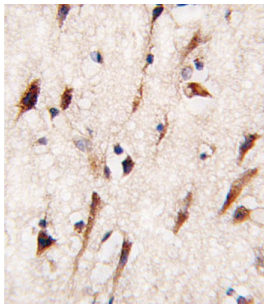
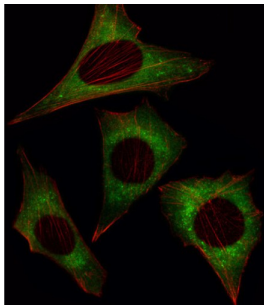


Mps One Binder Kinase Activator-Like 1A (MOB4A) Antibody

Catalogue No.: abx033133



MOB4A is similar to the yeast Mob1 protein. Yeast Mob1 binds Mps1p, a protein kinase essential for spindle pole body duplication and mitotic checkpoint regulation. Mob4A regulates NDR1 and NDR2 kinase activity, widely expressed nuclear serine-threonine kinases that have been implicated in cell proliferation and/or tumor progression.

Target: Mps One Binder Kinase Activator-Like 1A (MOB4A)

Clonality: Polyclonal

Reactivity: Human, Mouse

Tested Applications: ELISA, WB, IHC, IF/ICC

Host: Rabbit

Recommended dilutions: WB: 1/1000, IHC-P: 1/10 - 1/50, IF/ICC: 1/10 - 1/50. Not tested in IHC-F. Optimal dilutions/concentrations should be determined by the end user.

Datasheet

Version: 4.0.0
Revision date: 16 Apr 2025



Conjugation:	Unconjugated
Immunogen:	KLH-conjugated synthetic peptide between 177-206 amino acids from the C-terminal region of human MOB4A.
Isotype:	IgG
Form:	Liquid
Purification:	Purified through a protein A column, eluted with high and low pH buffers and neutralized immediately, followed by dialysis against PBS.
Storage:	Aliquot and store at -20°C. Avoid repeated freeze/thaw cycles.
UniProt Primary AC:	Q7L9L4 (UniProt , ExPASy)
NCBI Accession:	NP_001231695.1, NP_775739.1
KEGG:	hsa:92597
String:	9606.ENSP00000379366
Molecular Weight:	Calculated MW: 25.1 kDa
Buffer:	PBS containing 0.09% sodium azide.
Specificity:	Predicted to react with Rat MOB1B.
Note:	THIS PRODUCT IS FOR RESEARCH USE ONLY. NOT FOR USE IN DIAGNOSTIC, THERAPEUTIC OR COSMETIC PROCEDURES. NOT FOR HUMAN OR ANIMAL CONSUMPTION.