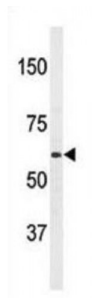


Amyloid Protein-Binding Protein 2 (APPBP2) Antibody

Catalogue No.: abx033292



APPBP2 interacts with microtubules and is functionally associated with beta-amyloid precursor protein transport and/or processing. The beta-amyloid precursor protein is a cell surface protein with signal-transducing properties, and it is thought to play a role in the pathogenesis of Alzheimer's disease. This protein has been found to be highly expressed in breast cancer.

Target:	Amyloid Protein-Binding Protein 2 (APPBP2)
Clonality:	Polyclonal
Reactivity:	Human
Tested Applications:	ELISA, WB
Host:	Rabbit
Recommended dilutions:	WB: 1/1000. Optimal dilutions/concentrations should be determined by the end user.
Conjugation:	Unconjugated
Immunogen:	KLH-conjugated synthetic peptide between 242-271 amino acids from the Central region of human PAT1 (APPBP2).
Isotype:	IgG
Form:	Liquid
Purification:	Purified through a protein G column, eluted with high and low pH buffers and neutralized immediately, followed by dialysis against PBS.
Storage:	Aliquot and store at -20°C. Avoid repeated freeze/thaw cycles.
UniProt Primary AC:	Q92624 (UniProt , ExPASy)
KEGG:	hsa:10513

Datasheet

Version: 2.0.0
Revision date: 15 Aug 2024



String: [9606.ENSP00000083182](#)

Molecular Weight: Calculated MW: 66.9 kDa

Buffer: PBS containing 0.09% sodium azide.

Specificity: Predicted to react with Mouse and Rat APPBP2.

Note: This product is for research use only.

For Reference Only