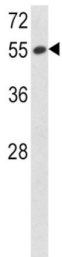
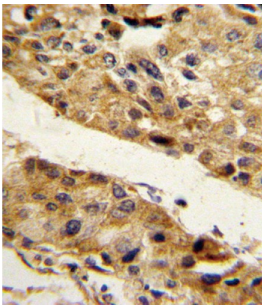
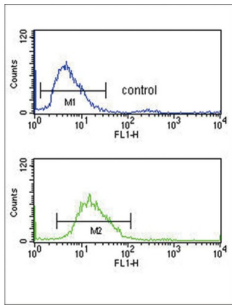


# Pigment Epithelium-Derived Factor / PEDF (SERPINF1) Antibody

Catalogue No.: abx033320



Pigment Epithelium-Derived Factor / PEDF (SERPINF1) is a member of the serpin family. Serpins are a group of serine protease inhibitors, some of which have also been reported to exhibit neurotrophic activity.

**Target:** Pigment Epithelium-Derived Factor / PEDF (SERPINF1)

**Clonality:** Polyclonal

**Reactivity:** Human

**Tested Applications:** ELISA, WB, IHC, FCM

**Host:** Rabbit

**Recommended dilutions:** WB: 1/1000, IHC-P: 1/10 - 1/50, FCM: 1/10 - 1/50. Not tested in IHC-F. Optimal dilutions/concentrations should be determined by the end user.

# Datasheet

Version: 1.0.0  
Revision date: 10 Oct 2024



|                            |   |
|----------------------------|---|
| <b>Conjugation:</b>        | Unconjugated  |
| <b>Immunogen:</b>          | KLH-conjugated synthetic peptide between 9-36 amino acids from the N-terminal region of human SERPINF1. |
| <b>Isotype:</b>            | IgG   |
| <b>Form:</b>               | Liquid  |
| <b>Purification:</b>       | Purified Rabbit Polyclonal Antibody.  |
| <b>Storage:</b>            | Aliquot and store at -20°C. Avoid repeated freeze/thaw cycles.  |
| <b>UniProt Primary AC:</b> | P36955 ( <a href="#">UniProt</a> , <a href="#">ExPASy</a> )   |
| <b>Gene Symbol:</b>        | SERPINF1  |
| <b>GeneID:</b>             | <a href="#">5176</a>  |
| <b>OMIM:</b>               | <a href="#">172860</a>  |
| <b>HGNC:</b>               | 8824  |
| <b>KEGG:</b>               | hsa:5176  |
| <b>Ensembl:</b>            | ENSG00000132386   |
| <b>String:</b>             | <a href="#">9606.ENSP00000254722</a>  |
| <b>Molecular Weight:</b>   | Calculated MW: 46.3 kDa   |
| <b>Buffer:</b>             | PBS containing 0.09% sodium azide.  |
| <b>Note:</b>               | This product is for research use only.  |