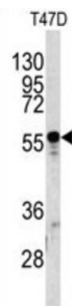
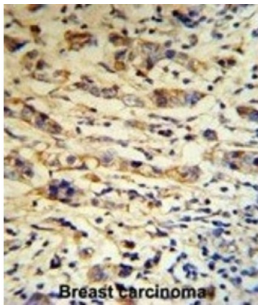


Datasheet

Version: 2.0.0
Revision date: 12 Mar 2025

Alpha-1-B Glycoprotein (A1BG) Antibody

Catalogue No.: abx033325



A1BG is a plasma glycoprotein of unknown function. The protein shows sequence similarity to the variable regions of some immunoglobulin supergene family member proteins.

Target: Alpha-1-B Glycoprotein (A1BG)

Clonality: Polyclonal

Reactivity: Human

Tested Applications: ELISA, WB, IHC

Host: Rabbit

Recommended dilutions: WB: 1/1000, IHC-P: 1/50 - 1/100. Not tested in IHC-F. Optimal dilutions/concentrations should be determined by the end user.

Conjugation: Unconjugated

Immunogen: KLH-conjugated synthetic peptide between 421-449 amino acids from the C-terminal region of human A1BG.

Isotype: IgG

Form: Liquid

Datasheet

Version: 2.0.0
Revision date: 12 Mar 2025



Purification:	Purified Rabbit Polyclonal Antibody.
Storage:	Aliquot and store at -20°C. Avoid repeated freeze/thaw cycles.
UniProt Primary AC:	P04217 (UniProt , ExPASy)
KEGG:	hsa:1
String:	9606.ENSP00000263100
Molecular Weight:	Calculated MW: 54.3 kDa
Buffer:	PBS containing 0.09% sodium azide.
Note:	THIS PRODUCT IS FOR RESEARCH USE ONLY. NOT FOR USE IN DIAGNOSTIC, THERAPEUTIC OR COSMETIC PROCEDURES. NOT FOR HUMAN OR ANIMAL CONSUMPTION.

For Reference Only