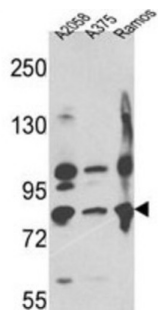
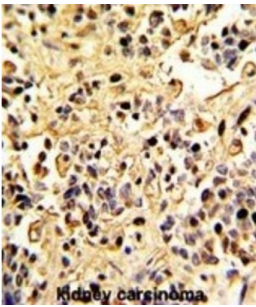
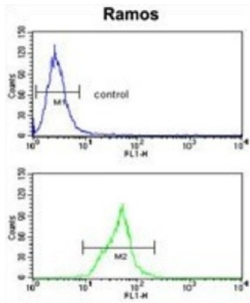


Neprilysin / NEP (MME) Antibody

Catalogue No.: abx033331



MME is a common acute lymphocytic leukemia antigen that is an important cell surface marker in the diagnosis of human acute lymphocytic leukemia (ALL). This protein is present on leukemic cells of pre-B phenotype, which represent 85% of cases of ALL. This protein is not restricted to leukemic cells, however, and is found on a variety of normal tissues. It is a protein that is particularly abundant in kidney, where it is present on the brush border of proximal tubules and on glomerular epithelium. The protein is a neutral endopeptidase that cleaves peptides at the amino side of hydrophobic residues and inactivates several peptide hormones including glucagon, enkephalins, substance P, neurotensin, oxytocin, and bradykinin.

Target:	Neprilysin / NEP (MME)
Clonality:	Polyclonal
Reactivity:	Human
Tested Applications:	ELISA, WB, IHC, FCM
Host:	Rabbit

Datasheet

Version: 3.0.0
Revision date: 27 Dec 2024



Recommended dilutions: WB: 1/1000, IHC-P: 1/50 - 1/100, FCM: 1/10 - 1/50. Not tested in IHC-F. Optimal dilutions/concentrations should be determined by the end user.

Conjugation: Unconjugated

Immunogen: KLH-conjugated synthetic peptide between 506-534 amino acids from the C-terminal region of human Neprilysin.

Isotype: IgG

Form: Liquid

Purification: Purified through a protein A column, followed by peptide affinity purification.

Storage: Aliquot and store at -20°C. Avoid repeated freeze/thaw cycles.

UniProt Primary AC: P08473 ([UniProt](#), [ExPASy](#))

KEGG: hsa:4311

String: [9606.ENSP00000418525](#)

Molecular Weight: Calculated MW: 85.5 kDa

Buffer: PBS containing 0.09% sodium azide.

Specificity: Predicted to react with Mouse, Rat and Rabbit MME.

Note: This product is for research use only.

For Reference Only