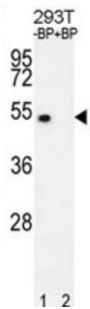


## E2F Transcription Factor 1 (E2F1) Antibody

Catalogue No.: abx033499



E2F1 is a member of the E2F family of transcription factors. The E2F family plays a crucial role in the control of cell cycle and action of tumor suppressor proteins and is also a target of the transforming proteins of small DNA tumor viruses. The E2F proteins contain several evolutionarily conserved domains found in most members of the family. These domains include a DNA binding domain, a dimerization domain which determines interaction with the differentiation regulated transcription factor proteins (DP), a transactivation domain enriched in acidic amino acids, and a tumor suppressor protein association domain which is embedded within the transactivation domain. This protein and another two members, E2F2 and E2F3, have an additional cyclin binding domain. This protein binds preferentially to retinoblastoma protein pRB in a cell-cycle dependent manner. It can mediate both cell proliferation and p53-dependent/independent apoptosis.

<b>Target:</b>	E2F Transcription Factor 1 (E2F1)
<b>Clonality:</b>	Polyclonal
<b>Reactivity:</b>	Human
<b>Tested Applications:</b>	ELISA, WB
<b>Host:</b>	Rabbit
<b>Recommended dilutions:</b>	WB: 1/2000. Optimal dilutions/concentrations should be determined by the end user.
<b>Conjugation:</b>	Unconjugated
<b>Immunogen:</b>	KLH-conjugated synthetic peptide between 342-371 amino acids from human E2F1.
<b>Isotype:</b>	IgG
<b>Form:</b>	Liquid
<b>Purification:</b>	Purified through a protein A column, followed by peptide affinity purification.
<b>Storage:</b>	Aliquot and store at -20°C. Avoid repeated freeze/thaw cycles.

# Datasheet

Version: 1.0.0  
Revision date: 23 Feb 2025



**UniProt Primary AC:** Q01094 ([UniProt](#), [ExPASy](#))

**KEGG:** hsa:1869

**String:** [9606.ENSP00000345571](#)

**Molecular Weight:** Calculated MW: 46.9 kDa

**Buffer:** PBS containing 0.09% sodium azide.

**Note:** This product is for research use only.

For Reference Only