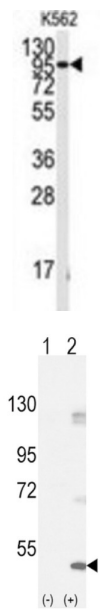


Fibroblast Growth Factor Receptor 1 (FGFR1) Antibody

Catalogue No.: abx033556



WB analysis of K562 cells.

WB analysis of (1) non-transfected, and (2) FGFR1-transfected 293 cell lysates.

FGFR1 is a member of the fibroblast growth factor receptor family, where amino acid sequence is highly conserved between members and throughout evolution. FGFR family members differ from one another in their ligand affinities and tissue distribution. A full-length representative protein consists of an extracellular region, composed of three immunoglobulin-like domains, a single hydrophobic membrane-spanning segment and a cytoplasmic tyrosine kinase domain. The extracellular portion of the protein interacts with fibroblast growth factors, setting in motion a cascade of downstream signals, ultimately influencing mitogenesis and differentiation. This particular family member binds both acidic and basic fibroblast growth factors and is involved in limb induction. Mutations in this gene can lead to Pfeiffer syndrome and Jackson-Weiss syndrome.

Target:	Fibroblast Growth Factor Receptor 1 (FGFR1)
Clonality:	Polyclonal
Reactivity:	Human
Tested Applications:	ELISA, WB
Host:	Rabbit
Recommended dilutions:	WB: 1/1000. Optimal dilutions/concentrations should be determined by the end user.
Conjugation:	Unconjugated
Immunogen:	KLH-conjugated synthetic peptide between 132-161 amino acids from human FGFR1.
Isotype:	IgG

Datasheet

Version: 4.0.0

Revision date: 06 Oct 2024



Form:	Liquid
Purification:	Purified through a protein A column, followed by peptide affinity purification.
Storage:	Aliquot and store at -20°C. Avoid repeated freeze/thaw cycles.
UniProt Primary AC:	P11362 (UniProt , ExPASy)
KEGG:	hsa:2260
String:	9606.ENSP00000393312
Molecular Weight:	Calculated MW: 91.9 kDa
Buffer:	PBS containing 0.09% sodium azide.
Note:	This product is for research use only.

For Reference Only