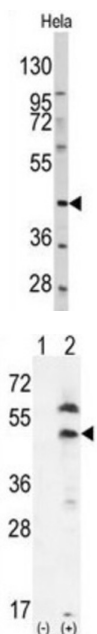
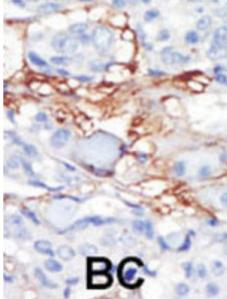


Platelet Derived Growth Factor Receptor Like Protein (PDGFRL) Antibody

Catalogue No.: abx033595



PDGFRL bears significant sequence similarity to the ligand binding domain of platelet-derived growth factor receptor beta. Mutations in the PDGFRL gene, or deletion of a chromosomal segment containing this gene, are associated with sporadic hepatocellular carcinomas, colorectal cancers, and non-small cell lung cancers. This suggests PDGFRL may function as a tumor suppressor.

Target: Platelet Derived Growth Factor Receptor Like Protein (PDGFRL)

Clonality: Polyclonal

Reactivity: Human

Tested Applications: ELISA, WB, IHC

Host: Rabbit

Datasheet

Version: 4.0.0
Revision date: 13 Mar 2025



Recommended dilutions: WB: 1/1000, IHC-P: 1/50 - 1/100. Not tested in IHC-F. Optimal dilutions/concentrations should be determined by the end user.

Conjugation: Unconjugated

Immunogen: KLH-conjugated synthetic peptide between 328-357 amino acids from the C-terminal region of human PDGFRL.

Isotype: IgG

Form: Liquid

Purification: Purified through a protein G column, eluted with high and low pH buffers and neutralized immediately, followed by dialysis against PBS.

Storage: Aliquot and store at -20°C. Avoid repeated freeze/thaw cycles.

UniProt Primary AC: Q15198 ([UniProt](#), [ExPASy](#))

KEGG: hsa:5157

String: [9606.ENSP00000444211](#)

Molecular Weight: Calculated MW: 41.9 kDa

Buffer: PBS containing 0.09% sodium azide.

Note: THIS PRODUCT IS FOR RESEARCH USE ONLY. NOT FOR USE IN DIAGNOSTIC, THERAPEUTIC OR COSMETIC PROCEDURES. NOT FOR HUMAN OR ANIMAL CONSUMPTION.