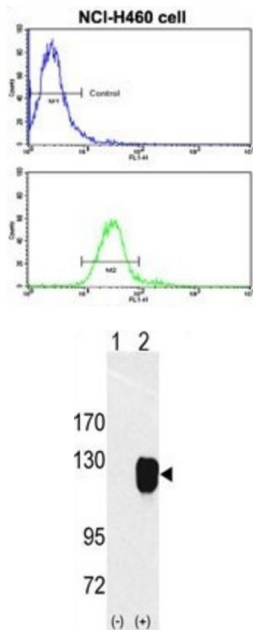


Receptor Tyrosine Kinase Like Orphan Receptor 1 (ROR1) Antibody

Catalogue No.: abx033600



ROR1 is a receptor protein tyrosine kinase whose cellular role has not been determined. It is a type I membrane protein and belongs to the ROR subfamily of cell surface receptors. Studies of a similar protein in mouse suggest that this protein may interact with another receptor protein tyrosine kinase and may be involved in skeletal and cardiac development.

Target:	Receptor Tyrosine Kinase Like Orphan Receptor 1 (ROR1)
Clonality:	Polyclonal
Reactivity:	Mouse
Tested Applications:	ELISA, WB, FCM
Host:	Rabbit
Recommended dilutions:	WB: 1/1000, FCM: 1/10 - 1/50. Optimal dilutions/concentrations should be determined by the end user.
Conjugation:	Unconjugated
Immunogen:	KLH-conjugated synthetic peptide between 32-62 amino acids from the N-terminal region of human ROR1.
Isotype:	IgG
Form:	Liquid

Datasheet

Version: 2.0.0
Revision date: 03 Feb 2025



Purification:	Purified through a protein G column, eluted with high and low pH buffers and neutralized immediately, followed by dialysis against PBS.
Storage:	Aliquot and store at -20°C. Avoid repeated freeze/thaw cycles.
UniProt Primary AC:	Q01973 (UniProt , ExPASy)
NCBI Accession:	NP_001077061.1, NP_005003.2
KEGG:	hsa:4919
String:	9606.ENSP00000360120
Molecular Weight:	Calculated MW: 104 kDa
Buffer:	PBS containing 0.09% sodium azide.
Note:	This product is for research use only.

For Reference Only