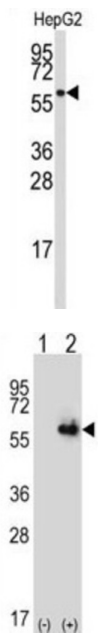
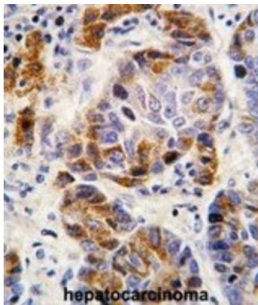


Aldehyde Dehydrogenase 4 Family, Member A1 (ALDH4A1) Antibody

Catalogue No.: abx033738



ALDH4A1 belongs to the aldehyde dehydrogenase family of proteins. This enzyme is a mitochondrial matrix NAD-dependent dehydrogenase which catalyzes the second step of the proline degradation pathway, converting pyrroline-5-carboxylate to glutamate. Deficiency of this enzyme is associated with type II hyperprolinemia, an autosomal recessive disorder characterized by accumulation of delta-1-pyrroline-5-carboxylate (P5C) and proline.

Target: Aldehyde Dehydrogenase 4 Family, Member A1 (ALDH4A1)

Clonality: Polyclonal

Reactivity: Human

Tested Applications: ELISA, WB, IHC

Host: Rabbit

Recommended dilutions: WB: 1/1000, IHC-P: 1/50 - 1/100. Not tested in IHC-F. Optimal dilutions/concentrations should be determined by the end user.

Datasheet

Version: 1.0.0
Revision date: 03 Dec 2024



Conjugation:	Unconjugated
Immunogen:	KLH-conjugated synthetic peptide between 288-314 amino acids from the Central region of human ALDH4A1.
Isotype:	IgG
Form:	Liquid
Purification:	Purified Rabbit Polyclonal Antibody.
Storage:	Aliquot and store at -20°C. Avoid repeated freeze/thaw cycles.
UniProt Primary AC:	P30038 (UniProt , ExPASy)
KEGG:	hsa:8659
String:	9606.ENSP00000364490
Molecular Weight:	Calculated MW: 61.7 kDa
Buffer:	PBS containing 0.09% sodium azide.
Note:	This product is for research use only.

For Reference Only