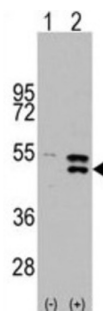
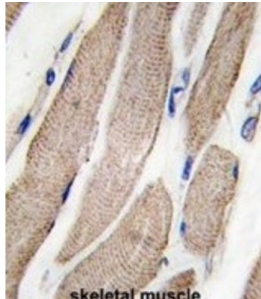


# Dual Specificity Mitogen-Activated Protein Kinase Kinase 5 (MAP2K5) Antibody

Catalogue No.: abx033755



MAP2K5 is a dual specificity protein kinase that belongs to the MAP kinase kinase family. It specifically interacts with and activates MAPK7/ERK5. This kinase itself can be phosphorylated and activated by MAP3K3/MEKK3, as well as by atypical protein kinase C isoforms (aPKCs). The signal cascade mediated by MAP2K5 is involved in growth factor stimulated cell proliferation and muscle cell differentiation.

<b>Target:</b>	Dual Specificity Mitogen-Activated Protein Kinase Kinase 5 (MAP2K5)
<b>Clonality:</b>	Polyclonal
<b>Reactivity:</b>	Human
<b>Tested Applications:</b>	ELISA, WB, IHC
<b>Host:</b>	Rabbit
<b>Recommended dilutions:</b>	WB: 1/1000, IHC-P: 1/10 - 1/50. Not tested in IHC-F. Optimal dilutions/concentrations should be determined by the end user.
<b>Conjugation:</b>	Unconjugated
<b>Immunogen:</b>	KLH-conjugated synthetic peptide between 127-156 amino acids from human MAP2K5.
<b>Isotype:</b>	IgG

# Datasheet

Version: 1.0.0  
Revision date: 15 Jan 2025



<b>Form:</b>	Liquid
<b>Purification:</b>	Purified through a protein A column, followed by peptide affinity purification.
<b>Storage:</b>	Aliquot and store at -20°C. Avoid repeated freeze/thaw cycles.
<b>UniProt Primary AC:</b>	Q13163 ( <a href="#">UniProt</a> , <a href="#">ExPASy</a> )
<b>KEGG:</b>	hsa:5607
<b>String:</b>	<a href="#">9606.ENSP00000178640</a>
<b>Molecular Weight:</b>	Calculated MW: 50.1 kDa
<b>Buffer:</b>	PBS containing 0.09% sodium azide.
<b>Note:</b>	This product is for research use only.

For Reference Only