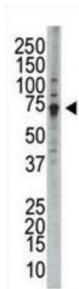
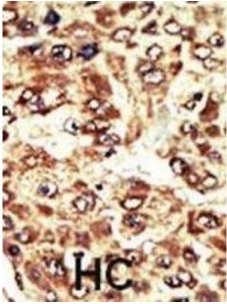


Wee1-Like Protein Kinase (WEE1) Antibody

Catalogue No.: abx033877



WEE1 is a nuclear protein, which is a tyrosine kinase belonging to the Ser/Thr family of protein kinases. This protein catalyzes the inhibitory tyrosine phosphorylation of CDC2/cyclin B kinase, and appears to coordinate the transition between DNA replication and mitosis by protecting the nucleus from cytoplasmically activated CDC2 kinase.

Target:	Wee1-Like Protein Kinase (WEE1)
Clonality:	Polyclonal
Reactivity:	Human
Tested Applications:	ELISA, WB, IHC
Host:	Rabbit
Recommended dilutions:	WB: 1/1000, IHC-P: 1/50 - 1/100. Not tested in IHC-F. Optimal dilutions/concentrations should be determined by the end user.
Conjugation:	Unconjugated
Immunogen:	KLH-conjugated synthetic peptide between 604-634 amino acids from the C-terminal region of human WEE1.
Isotype:	IgG
Form:	Liquid

Datasheet

Version: 2.0.0
Revision date: 13 Mar 2025



Purification:	Purified through a protein G column, eluted with high and low pH buffers and neutralized immediately, followed by dialysis against PBS.
Storage:	Aliquot and store at -20°C. Avoid repeated freeze/thaw cycles.
UniProt Primary AC:	P30291 (UniProt , ExPASy)
Gene Symbol:	WEE1
GeneID:	7465
OMIM:	193525
HGNC:	12761
KEGG:	hsa:7465
Ensembl:	ENSG00000166483
String:	9606.ENSP00000402084
Molecular Weight:	Calculated MW: 71.6 kDa
Buffer:	PBS containing 0.09% sodium azide.
Specificity:	Predicted to react with Mouse and Rat WEE1.
Note:	THIS PRODUCT IS FOR RESEARCH USE ONLY. NOT FOR USE IN DIAGNOSTIC, THERAPEUTIC OR COSMETIC PROCEDURES. NOT FOR HUMAN OR ANIMAL CONSUMPTION.

For Reference Only