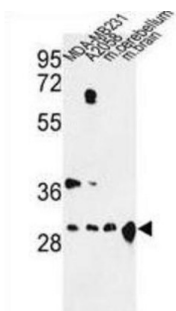
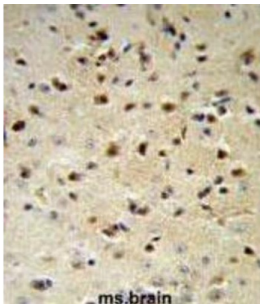
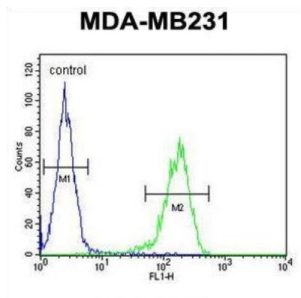


14-3-3 Protein Zeta/Delta (YWHAZ) Antibody

Catalogue No.: abx033912



YWHAZ belongs to the 14-3-3 family of proteins which mediate signal transduction by binding to phosphoserine-containing proteins. This highly conserved protein family is found in both plants and mammals, and this protein is 99% identical to the mouse, rat and sheep orthologs. The encoded protein interacts with IRS1 protein, suggesting a role in regulating insulin sensitivity. Two transcript variants differing in the 5' UTR, but encoding the same protein, have been identified for the gene. Both variants encode the same protein, however, they are differentially expressed in hematopoietic cells.

Target: 14-3-3 Protein Zeta/Delta (YWHAZ)

Clonality: Polyclonal

Reactivity: Human, Mouse

Tested Applications: ELISA, WB, IHC, FCM

Host: Rabbit

Datasheet

Version: 2.0.0
Revision date: 27 Mar 2025



Recommended dilutions:	WB: 1/1000, IHC-P: 1/50 - 1/100, FCM: 1/10 - 1/50. Not tested in IHC-F. Optimal dilutions/concentrations should be determined by the end user.
Conjugation:	Unconjugated
Immunogen:	KLH-conjugated synthetic peptide between 65-93 amino acids from the Central region of human YWHAZ.
Isotype:	IgG
Form:	Liquid
Purification:	Purified through a protein A column, followed by peptide affinity purification.
Storage:	Aliquot and store at -20°C. Avoid repeated freeze/thaw cycles.
UniProt Primary AC:	P63104 (UniProt , ExPASy)
KEGG:	hsa:7534
String:	9606.ENSP00000379287
Molecular Weight:	Calculated MW: 27.7 kDa
Buffer:	PBS containing 0.09% sodium azide.
Specificity:	Predicted to react with Rat, Cow, Chicken and Sheep YWHAZ.
Note:	THIS PRODUCT IS FOR RESEARCH USE ONLY. NOT FOR USE IN DIAGNOSTIC, THERAPEUTIC OR COSMETIC PROCEDURES. NOT FOR HUMAN OR ANIMAL CONSUMPTION.

For Reference Only