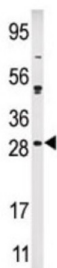
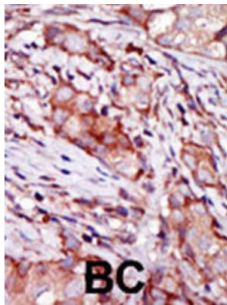


Calcium And Integrin-Binding Family Member 2 (CIB2) Antibody

Catalogue No.: abx033921



DNA-dependent protein kinases (DNA-PK) play a role in the repair of double-strand DNA breaks and in the process of V (D) J recombination during lymphoid development. By EST database searching for sequences homologous to the DNA-PK gene KIP/CIB and 5-prime RACE, Seki, N et al. isolated a full-length cDNA, which they designated as KIP2, from a human fetal brain cDNA library. KIP2 encodes a deduced 187-amino acid protein with a predicted molecular mass of 22 kD. The KIP2 protein shares 46%, 39%, and 30% sequence identity with the calcium-binding proteins KIP/CIB, calcineurin B and calmodulin respectively. KIP2 contains two EF-hand motifs and a helix-loop-helix motif involved in coordinating the calcium ion, indicating that KIP2 may also bind calcium. KIP2 is ubiquitously expressed in various human tissues.

Target: Calcium And Integrin-Binding Family Member 2 (CIB2)

Clonality: Polyclonal

Reactivity: Human

Tested Applications: ELISA, WB, IHC

Host: Rabbit

Recommended dilutions: WB: 1/1000, IHC-P: 1/50 - 1/100. Not tested in IHC-F. Optimal dilutions/concentrations should be determined by the end user.

Conjugation: Unconjugated

Immunogen: KLH-conjugated synthetic peptide between 8-37 amino acids from the N-terminal region of human KIP2.

Datasheet

Version: 3.0.0
Revision date: 28 Mar 2025



Isotype:	IgG
Form:	Liquid
Purification:	Purified through a protein G column, eluted with high and low pH buffers and neutralized immediately, followed by dialysis against PBS.
Storage:	Aliquot and store at -20°C. Avoid repeated freeze/thaw cycles.
UniProt Primary AC:	O75838 (UniProt , ExPASy)
KEGG:	hsa:10518
String:	9606.ENSP00000258930
Molecular Weight:	Calculated MW: 21.6 kDa
Buffer:	PBS containing 0.09% sodium azide.
Note:	THIS PRODUCT IS FOR RESEARCH USE ONLY. NOT FOR USE IN DIAGNOSTIC, THERAPEUTIC OR COSMETIC PROCEDURES. NOT FOR HUMAN OR ANIMAL CONSUMPTION.

For Reference Only