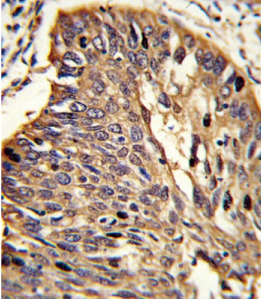


# Myeloid Differentiation Primary Response Protein MyD88 (MYD88) Antibody

Catalogue No.: abx033978



Adapter protein involved in the Toll-like receptor and IL-1 receptor signaling pathway in the innate immune response. It acts via IRAK1, IRAK2 and TRAF6, leading to NF-kappa-B activation, cytokine secretion and the inflammatory response and increases IL-8 transcription. It may be involved in myeloid differentiation.

**Target:** Myeloid Differentiation Primary Response Protein MyD88 (MYD88)

**Clonality:** Polyclonal

**Reactivity:** Human, Mouse

**Tested Applications:** ELISA, WB, IHC, FCM

**Host:** Rabbit

# Datasheet

Version: 1.0.0  
Revision date: 22 Dec 2024



**Recommended dilutions:** WB: 1/2000, IHC-P: 1/10 - 1/50, FCM: 1/10 - 1/50. Not tested in IHC-F. Optimal dilutions/concentrations should be determined by the end user.

**Conjugation:** Unconjugated

**Immunogen:** KLH-conjugated synthetic peptide between 136-164 amino acids from the Central region of human MyD88.

**Isotype:** IgG

**Form:** Liquid

**Purification:** Purified through a protein A column, followed by peptide affinity purification.

**Storage:** Aliquot and store at -20°C. Avoid repeated freeze/thaw cycles.

**UniProt Primary AC:** Q99836 ([UniProt](#), [ExPASy](#))

**Gene Symbol:** MYD88

**NCBI Accession:** NP\_001166037.1, NP\_001166039.1, NP\_001166040.1, NP\_002459.2

**KEGG:** hsa:4615

**String:** [9606.ENSP00000401399](#)

**Molecular Weight:** Calculated MW: 33.2 kDa

**Buffer:** PBS containing 0.09% sodium azide.

**Specificity:** Predicted to react with Monkey MYD88.

**Note:** This product is for research use only.