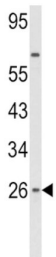
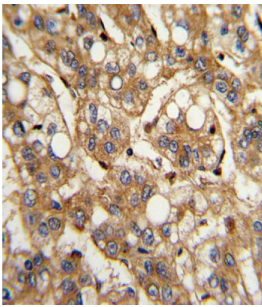
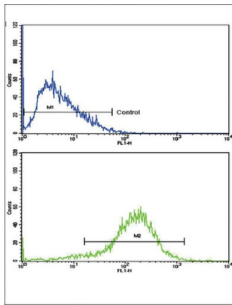


## Interferon Beta 1 (IFNB1) Antibody

Catalogue No.: abx033989



IFNB1 has antiviral, antibacterial and anticancer activities.

**Target:** Interferon Beta 1 (IFNB1)

**Clonality:** Polyclonal

**Reactivity:** Human

**Tested Applications:** ELISA, WB, IHC, FCM

**Host:** Rabbit

**Recommended dilutions:** WB: 1/2000, IHC-P: 1/10 - 1/50, FCM: 1/25. Not tested in IHC-F. Optimal dilutions/concentrations should be determined by the end user.

**Conjugation:** Unconjugated

# Datasheet

Version: 2.0.0  
Revision date: 31 Dec 2024



<b>Immunogen:</b>	KLH-conjugated synthetic peptide between 39-66 amino acids from the N-terminal region of human IFNB1.
<b>Isotype:</b>	IgG
<b>Form:</b>	Liquid
<b>Purification:</b>	Purified through a protein A column, followed by peptide affinity purification.
<b>Storage:</b>	Aliquot and store at -20°C. Avoid repeated freeze/thaw cycles.
<b>UniProt Primary AC:</b>	P01574 ( <a href="#">UniProt</a> , <a href="#">ExPASy</a> )
<b>Gene Symbol:</b>	IFNB1
<b>NCBI Accession:</b>	NP_002167.1
<b>KEGG:</b>	hsa:3456
<b>String:</b>	<a href="#">9606.ENSP00000369581</a>
<b>Molecular Weight:</b>	Calculated MW: 22.3 kDa
<b>Buffer:</b>	PBS containing 0.09% sodium azide.
<b>Specificity:</b>	Predicted to react with Monkey IFNB1.
<b>Note:</b>	This product is for research use only.

For Reference Only