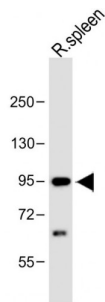
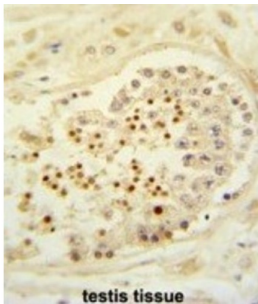


## E3 Ubiquitin-Protein Ligase CBL-B (CBLB) Antibody

Catalogue No.: abx034055

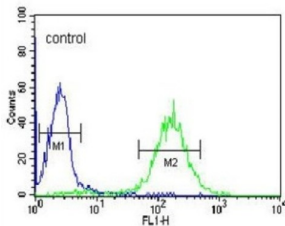


WB analysis of rat spleen whole tissue lysate (20 µg), using CBLB antibody (1/1000 dilution) and HRP-conjugated goat anti-rabbit IgG (H+L) (1/10000 dilution). Predicted band size: 109 kDa. Blocking/dilution buffer: 5% NFD/MTBST.



IHC-P analysis of human testis tissue, with DAB staining.

### HL-60



Flow cytometry analysis of HL-60 cells (right) and negative control (left, Rabbit IgG isotype control). FITC-conjugated goat anti-rabbit was used as the secondary antibody.

E3 ubiquitin-protein ligase which accepts ubiquitin from specific E2 ubiquitin-conjugating enzymes, and transfers it to substrates, generally promoting their degradation by the proteasome. Negatively regulates TCR (T-cell receptor), BCR (B-cell receptor) and FCER1 (high affinity immunoglobulin epsilon receptor) signal transduction pathways. In naive T-cells, inhibits VAV1 activation upon TCR engagement and imposes a requirement for CD28 costimulation for proliferation and IL-2 production. It also acts by promoting PIK3R1/p85 ubiquitination, which impairs its recruitment to the TCR and subsequent activation. In activated T-cells, inhibits PLCG1 activation and calcium mobilization upon restimulation and promotes energy. In B-cells, acts by ubiquitinating SYK and promoting its proteasomal degradation. It may also be involved in EGFR ubiquitination and internalization.

**Target:** E3 Ubiquitin-Protein Ligase CBL-B (CBLB)

**Clonality:** Polyclonal

**Reactivity:** Rat

**Tested Applications:** ELISA, WB, IHC, FCM

# Datasheet

Version: 3.0.0  
Revision date: 09 Nov 2024



<b>Host:</b>	Rabbit
<b>Recommended dilutions:</b>	WB: 1/1000, IHC-P: 1/50 - 1/100, FCM: 1/10 - 1/50. Not tested in IHC-F. Optimal dilutions/concentrations should be determined by the end user.
<b>Conjugation:</b>	Unconjugated
<b>Immunogen:</b>	KLH-conjugated synthetic peptide between 103-130 amino acids from the Central region of human CBLB.
<b>Isotype:</b>	IgG
<b>Form:</b>	Liquid
<b>Purification:</b>	Purified through a protein A column, followed by peptide affinity purification.
<b>Storage:</b>	Aliquot and store at -20°C. Avoid repeated freeze/thaw cycles.
<b>UniProt Primary AC:</b>	Q13191 ( <a href="#">UniProt</a> , <a href="#">ExPASy</a> )
<b>Gene Symbol:</b>	CBLB
<b>GeneID:</b>	<a href="#">868</a>
<b>OMIM:</b>	<a href="#">604491</a>
<b>HGNC:</b>	1542
<b>KEGG:</b>	hsa:868
<b>Ensembl:</b>	ENSG00000114423
<b>String:</b>	<a href="#">9606.ENSP00000264122</a>
<b>Molecular Weight:</b>	Calculated MW: 109 kDa
<b>Buffer:</b>	PBS containing 0.09% sodium azide.
<b>Specificity:</b>	Predicted to react with Mouse and Xenopus CBLB.
<b>Note:</b>	This product is for research use only.