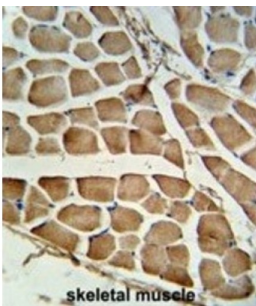
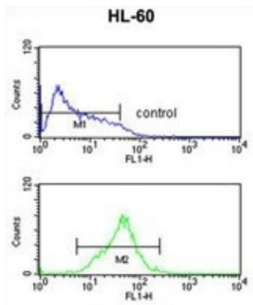


Caspase Recruitment Domain-Containing Protein 4 (CARD4) Antibody

Catalogue No.: abx034078



CARD4 is a member of the NOD (nucleotide-binding oligomerization domain) family. This member is a cytosolic protein. It contains an N-terminal caspase recruitment domain (CARD), a centrally located nucleotide-binding domain (NBD), and 10 tandem leucine-rich repeats (LRRs) in its C terminus. The CARD is involved in apoptotic signaling, LRRs participate in protein-protein interactions, and mutations in the NBD may affect the process of oligomerization and subsequent function of the LRR domain. This protein is an intracellular pattern-recognition receptor (PRR) that initiates inflammation in response to a subset of bacteria through the detection of bacterial diaminopimelic acid.

Target: Caspase Recruitment Domain-Containing Protein 4 (CARD4)

Clonality: Polyclonal

Reactivity: Human

Tested Applications: ELISA, WB, IHC, FCM

Host: Rabbit

Datasheet

Version: 4.0.0
Revision date: 14 Jan 2025



Recommended dilutions: WB: 1/1000, IHC-P: 1/50 - 1/100, FCM: 1/10 - 1/50. Not tested in IHC-F. Optimal dilutions/concentrations should be determined by the end user.

Conjugation: Unconjugated

Immunogen: KLH-conjugated synthetic peptide between 923-951 amino acids from the C-terminal region of human CARD4.

Isotype: IgG

Form: Liquid

Purification: Purified through a protein A column, followed by peptide affinity purification.

Storage: Aliquot and store at -20°C. Avoid repeated freeze/thaw cycles.

UniProt Primary AC: Q9Y239 ([UniProt](#), [ExpASY](#))

String: [9606.ENSP0000022823](#)

Molecular Weight: Calculated MW: 108 kDa

Buffer: PBS containing 0.09% sodium azide.

Note: This product is for research use only.

For Reference Only