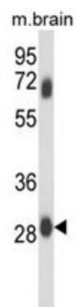
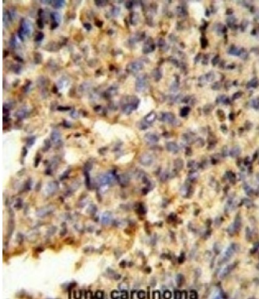


## Fc Fragment of IgG, Low Affinity IIC, Receptor For (CD32) (FCGR2C) Antibody

Catalogue No.: abx034188



FCGR2C is the receptor for the Fc region of complexed immunoglobulins gamma. Low affinity receptor. It is involved in a variety of effector and regulatory functions such as phagocytosis of immune complexes and modulation of antibody production by B-cells.

**Target:** Fc Fragment of IgG, Low Affinity IIC, Receptor For (CD32) (FCGR2C)

**Clonality:** Polyclonal

**Reactivity:** Human

**Tested Applications:** ELISA, WB, IHC

**Host:** Rabbit

**Recommended dilutions:** WB: 1/1000, IHC-P: 1/50 - 1/100. Not tested in IHC-F. Optimal dilutions/concentrations should be determined by the end user.

**Conjugation:** Unconjugated

**Immunogen:** KLH-conjugated synthetic peptide between 281-307 amino acids from the C-terminal region of human FCGR2C.

**Isotype:** IgG

# Datasheet

Version: 3.0.0  
Revision date: 12 Mar 2025



<b>Form:</b>	Liquid
<b>Purification:</b>	Purified through a protein A column, followed by peptide affinity purification.
<b>Storage:</b>	Aliquot and store at -20°C. Avoid repeated freeze/thaw cycles.
<b>UniProt Primary AC:</b>	P31995 ( <a href="#">UniProt</a> , <a href="#">ExPASy</a> )
<b>Gene Symbol:</b>	FCGR2C
<b>KEGG:</b>	hsa:9103
<b>Molecular Weight:</b>	Calculated MW: 35.6 kDa
<b>Buffer:</b>	PBS containing 0.09% sodium azide.
<b>Note:</b>	THIS PRODUCT IS FOR RESEARCH USE ONLY. NOT FOR USE IN DIAGNOSTIC, THERAPEUTIC OR COSMETIC PROCEDURES. NOT FOR HUMAN OR ANIMAL CONSUMPTION.

For Reference Only