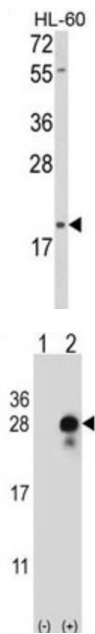
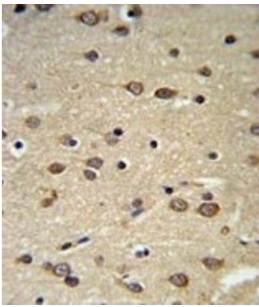


Protein Delta Homolog 2 (DLK2) Antibody

Catalogue No.: abx034198



DLK2 (Delta like protein 2) affects adipogenesis of 3T3-L1 preadipocytes and mesenchymal C3H10T1/2 cells suggesting a role as a regulator of adipogenesis.

Target: Protein Delta Homolog 2 (DLK2)

Clonality: Polyclonal

Reactivity: Human

Tested Applications: ELISA, WB, IHC, FCM

Host: Rabbit

Recommended dilutions: WB: 1/1000, IHC-P: 1/50 - 1/100, FCM: 1/10 - 1/50. Not tested in IHC-F. Optimal dilutions/concentrations should be determined by the end user.

Datasheet

Version: 7.0.0
Revision date: 15 Nov 2024



Conjugation:	Unconjugated
Immunogen:	KLH-conjugated synthetic peptide between 353-380 amino acids from the C-terminal region of human DLK2.
Isotype:	IgG
Form:	Liquid
Purification:	Purified through a protein A column, followed by peptide affinity purification.
Storage:	Aliquot and store at -20°C. Avoid repeated freeze/thaw cycles.
UniProt Primary AC:	Q6UY11 (UniProt , ExPASy)
Gene Symbol:	DLK2
NCBI Accession:	NP_076421.2, NP_996262.1
KEGG:	hsa:65989
String:	9606.ENSP00000349893
Molecular Weight:	Calculated MW: 40.5 kDa
Buffer:	PBS containing 0.09% sodium azide.
Note:	This product is for research use only.

For Reference Only