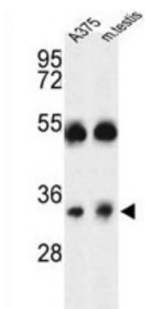
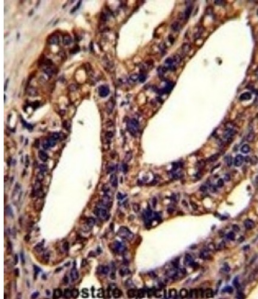


Calcium Release-Activated Calcium Channel Protein 1 (ORAI1) Antibody

Catalogue No.: abx034341



ORAI1 is a plasma membrane protein essential for store-operated calcium entry.

Target: Calcium Release-Activated Calcium Channel Protein 1 (ORAI1)

Clonality: Polyclonal

Reactivity: Human, Mouse

Tested Applications: ELISA, WB

Host: Rabbit

Recommended dilutions: WB: 1/2000. Optimal dilutions/concentrations should be determined by the end user.

Conjugation: Unconjugated

Immunogen: KLH-conjugated synthetic peptide between 145-173 amino acids from the Central region of human ORAI1.

Isotype: IgG

Form: Liquid

Datasheet

Version: 2.0.0
Revision date: 23 Nov 2024



Purification:	Purified through a protein A column, followed by peptide affinity purification.
Storage:	Aliquot and store at -20°C. Avoid repeated freeze/thaw cycles.
UniProt Primary AC:	Q96D31 (UniProt , ExpASY)
Gene Symbol:	ORAI1
GeneID:	84876
OMIM:	610277
NCBI Accession:	NP_116179.2, NM_032790.3
HGNC:	25896
KEGG:	hsa:84876
Ensembl:	ENSG00000276045
String:	9606.ENSP00000480616
Molecular Weight:	Calculated MW: 32.7 kDa
Buffer:	PBS containing 0.09% sodium azide.
Specificity:	Predicted to react with Rat, Chicken and Zebrafish ORAI1.
Note:	This product is for research use only.

For Reference Only