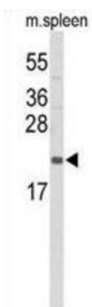
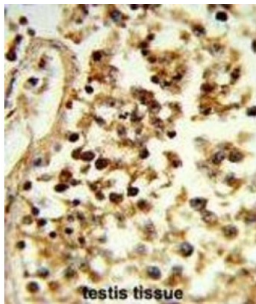
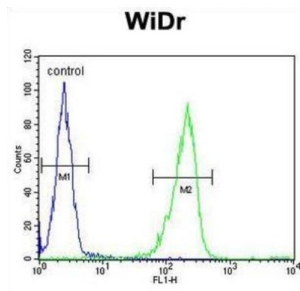


Interleukin 31 (IL31) Antibody

Catalogue No.: abx034351



IL31, which is made principally by activated Th2-type T cells, interacts with a heterodimeric receptor consisting of IL31RA (MIM 609510) and OSMR (MIM 601743) that is constitutively expressed on epithelial cells and keratinocytes. IL31 may be involved in the promotion of allergic skin disorders and in regulating other allergic diseases, such as asthma.

Target:	Interleukin 31 (IL31)
Clonality:	Polyclonal
Reactivity:	Human
Tested Applications:	ELISA, WB, IHC, FCM
Host:	Rabbit

Recommended dilutions: WB: 1/1000, IHC-P: 1/50 - 1/100, FCM: 1/10 - 1/50. Not tested in IHC-F. Optimal dilutions/concentrations should be determined by the end user.

Datasheet

Version: 2.0.0
Revision date: 08 Feb 2025



Conjugation:	Unconjugated
Immunogen:	KLH-conjugated synthetic peptide between 13-40 amino acids from the N-terminal region of human IL31.
Isotype:	IgG
Form:	Liquid
Purification:	Purified through a protein A column, followed by peptide affinity purification.
Storage:	Aliquot and store at -20°C. Avoid repeated freeze/thaw cycles.
UniProt Primary AC:	Q6EBC2 (UniProt , ExPASy)
NCBI Accession:	NP_001014358.1
KEGG:	hsa:386653
String:	9606.ENSP00000366234
Molecular Weight:	Calculated MW: 18.2 kDa
Buffer:	PBS containing 0.09% sodium azide.
Note:	This product is for research use only.

For Reference Only