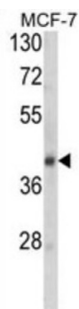
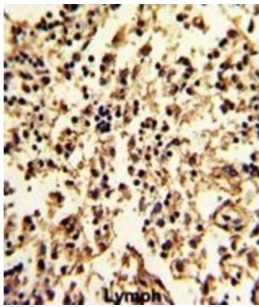
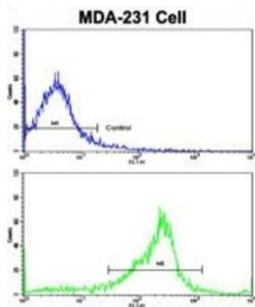


Serpin Family A Member 9 (SERPINA9) Antibody

Catalogue No.: abx034371



SERPINA9 is a protease inhibitor that inhibits trypsin and trypsin-like serine proteases (in vitro). This protein inhibits plasmin and thrombin with lower efficiency (in vitro).

Target: Serpin Family A Member 9 (SERPINA9)

Clonality: Polyclonal

Reactivity: Human

Tested Applications: ELISA, IHC, FCM

Host: Rabbit

Recommended dilutions: IHC-P: 1/10 - 1/50, FCM: 1/10 - 1/50. Not tested in IHC-F. Optimal dilutions/concentrations should be determined by the end user.

Datasheet

Version: 2.0.0
Revision date: 28 Jan 2025



Conjugation:	Unconjugated
Immunogen:	KLH-conjugated synthetic peptide between 194-222 amino acids from the Central region of human SERPINA9.
Isotype:	IgG
Form:	Liquid
Purification:	Purified through a protein A column, followed by peptide affinity purification.
Storage:	Aliquot and store at -20°C. Avoid repeated freeze/thaw cycles.
UniProt Primary AC:	Q86WD7 (UniProt , ExpASY)
Gene Symbol:	SERPINA9
NCBI Accession:	NP_001035983.1, NP_783866.2
KEGG:	hsa:327657
String:	9606.ENSP00000337133
Molecular Weight:	Calculated MW: 46.6 kDa
Buffer:	PBS containing 0.09% sodium azide.
Note:	This product is for research use only.

For Reference Only