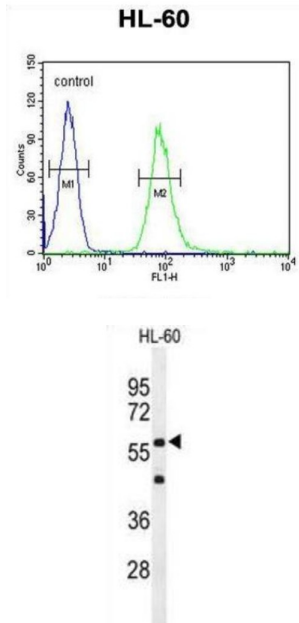


Interleukin 2 Receptor, Gamma (IL2RG) Antibody

Catalogue No.: abx034376



IL2RG is an important signaling component of many interleukin receptors, including those of interleukin 2, 4, 7 and 21, and is thus referred to as the common gamma chain. Mutations in this gene cause X-linked severe combined immunodeficiency (XSCID), as well as X-linked combined immunodeficiency (XCID), a less severe immunodeficiency disorder.

Target: Interleukin 2 Receptor, Gamma (IL2RG)

Clonality: Polyclonal

Reactivity: Human

Tested Applications: ELISA, WB, IF/ICC, FCM

Host: Rabbit

Recommended dilutions: WB: 1/1000, IF/ICC: 1/25, FCM: 1/10 - 1/50. Optimal dilutions/concentrations should be determined by the end user.

Conjugation: Unconjugated

Immunogen: KLH-conjugated synthetic peptide between 76-101 amino acids from the N-terminal region of human IL2RG.

Isotype: IgG

Form: Liquid

Datasheet

Version: 2.0.0
Revision date: 13 Mar 2025



Purification:	Purified through a protein A column, followed by peptide affinity purification.
Storage:	Aliquot and store at -20°C. Avoid repeated freeze/thaw cycles.
UniProt Primary AC:	P31785 (UniProt , ExPASy)
Gene Symbol:	IL2RG
KEGG:	hsa:3561
String:	9606.ENSP00000363318
Molecular Weight:	Calculated MW: 42.3 kDa
Buffer:	PBS containing 0.09% sodium azide.
Note:	THIS PRODUCT IS FOR RESEARCH USE ONLY. NOT FOR USE IN DIAGNOSTIC, THERAPEUTIC OR COSMETIC PROCEDURES. NOT FOR HUMAN OR ANIMAL CONSUMPTION.

For Reference Only