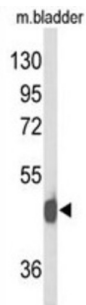


Neuropeptide Y Receptor Y2 (NPY2R) Antibody

Catalogue No.: abx034382



Receptor for neuropeptide Y and peptide YY. The rank order of affinity of this receptor for pancreatic polypeptides is PYY > NPY > PYY (3-36) > NPY (2-36) > [Ile-31, Gln-34] PP > [Leu-31, Pro-34] NPY > PP, [Pro-34] PYY and NPY free acid.

Target:	Neuropeptide Y Receptor Y2 (NPY2R)
Clonality:	Polyclonal
Reactivity:	Human, Mouse
Tested Applications:	ELISA, WB
Host:	Rabbit
Recommended dilutions:	WB: 1/1000. Optimal dilutions/concentrations should be determined by the end user.
Conjugation:	Unconjugated
Immunogen:	KLH-conjugated synthetic peptide between 19-45 amino acids from the N-terminal region of human NPY2R.
Isotype:	IgG
Form:	Liquid
Purification:	Purified through a protein A column, followed by peptide affinity purification.
Storage:	Aliquot and store at -20°C. Avoid repeated freeze/thaw cycles.
UniProt Primary AC:	P49146 (UniProt , ExpASY)
Gene Symbol:	NPY2R

Datasheet

Version: 2.0.0
Revision date: 15 Sep 2024



GeneID: [4887](#)

OMIM: [162642](#)

HGNC: 7957

KEGG: hsa:4887

Ensembl: ENSG00000185149

String: [9606.ENSP00000332591](#)

Molecular Weight: Calculated MW: 42.7 kDa

Buffer: PBS containing 0.09% sodium azide.

Note: This product is for research use only.

For Reference Only