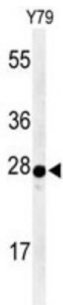


Serotonin N-Acetyltransferase (AANAT) Antibody

Catalogue No.: abx034449



AANAT belongs to the acetyltransferase superfamily. It is the penultimate enzyme in melatonin synthesis and controls the night/day rhythm in melatonin production in the vertebrate pineal gland. Melatonin is essential for the function of the circadian clock that influences activity and sleep. This enzyme is regulated by cAMP-dependent phosphorylation that promotes its interaction with 14-3-3 proteins and thus protects the enzyme against proteasomal degradation. This gene may contribute to numerous genetic diseases such as delayed sleep phase syndrome.

| | |
|-------------------------------|-------------------------------------------------------------------------------------------------------|
| Target: | Serotonin N-Acetyltransferase (AANAT) |
| Clonality: | Polyclonal |
| Reactivity: | Human |
| Tested Applications: | ELISA, WB |
| Host: | Rabbit |
| Recommended dilutions: | WB: 1/2000. Optimal dilutions/concentrations should be determined by the end user. |
| Conjugation: | Unconjugated |
| Immunogen: | KLH-conjugated synthetic peptide between 27-54 amino acids from the N-terminal region of human AANAT. |
| Isotype: | IgG |
| Form: | Liquid |
| Purification: | Purified through a protein A column, followed by peptide affinity purification. |
| Storage: | Aliquot and store at -20°C. Avoid repeated freeze/thaw cycles. |
| UniProt Primary AC: | Q16613 (UniProt , ExpASY) |

Datasheet

Version: 3.0.0

Revision date: 23 Mar 2025



KEGG: hsa:15

String: [9606.ENSP00000250615](#)

Molecular Weight: Calculated MW: 23.3 kDa

Buffer: PBS containing 0.09% sodium azide.

Note: THIS PRODUCT IS FOR RESEARCH USE ONLY. NOT FOR USE IN DIAGNOSTIC, THERAPEUTIC OR COSMETIC PROCEDURES. NOT FOR HUMAN OR ANIMAL CONSUMPTION.

For Reference Only