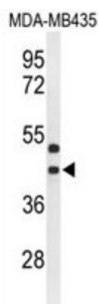
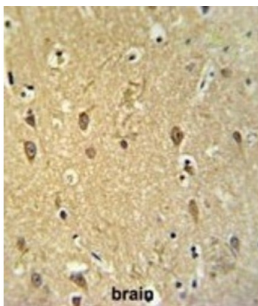
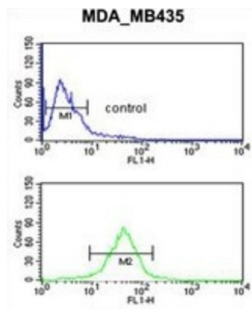


## Uracil Nucleotide/Cysteinyl Leukotriene Receptor (GPR17) Antibody

Catalogue No.: abx034541



Members of the G protein coupled receptor (GPCR) superfamily contain 7 transmembrane domains and transduce extracellular signals through heterotrimeric G proteins. The organization of the GPR17 gene differs from that of many other GPCRs in that the open reading frame is distributed on 2 exons; an additional exon contains the 5 prime untranslated region. Human GPR17 is expressed as 2.3 and 6.3 kb mRNAs exclusively in brain. The 2 transcripts appear to represent alternatively polyadenylated variants. Based on protein sequence homology and the conservation of certain key residues, GPR17 appears to be closely related to the P2Y family of GPCRs. There are two named isoforms.

**Target:** Uracil Nucleotide/Cysteinyl Leukotriene Receptor (GPR17)

**Clonality:** Polyclonal

**Reactivity:** Human

**Tested Applications:** ELISA, WB, IHC, FCM

**Host:** Rabbit

# Datasheet

Version: 2.0.0  
Revision date: 15 Jan 2025



**Recommended dilutions:** WB: 1/1000, IHC-P: 1/50 - 1/100, FCM: 1/10 - 1/50. Not tested in IHC-F. Optimal dilutions/concentrations should be determined by the end user.

**Conjugation:** Unconjugated

**Immunogen:** KLH-conjugated synthetic peptide between 230-258 amino acids from the Central region of human GPR17.

**Isotype:** IgG

**Form:** Liquid

**Purification:** Purified through a protein A column, followed by peptide affinity purification.

**Storage:** Aliquot and store at -20°C. Avoid repeated freeze/thaw cycles.

**UniProt Primary AC:** Q13304 ([UniProt](#), [ExPASy](#))

**KEGG:** hsa:2840

**String:** [9606.ENSP00000442982](#)

**Molecular Weight:** Calculated MW: 41 kDa

**Buffer:** PBS containing 0.09% sodium azide.

**Note:** This product is for research use only.

For Reference Only