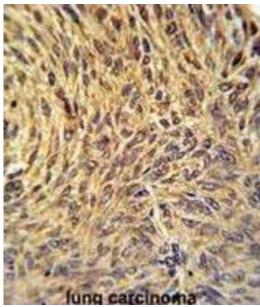
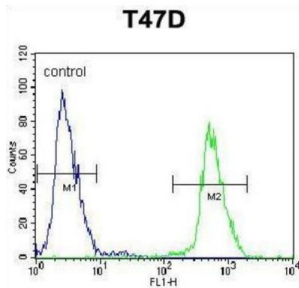


Nucleoporin 210 kDa / gp210 (NUP210) Antibody

Catalogue No.: abx034590



NUP210 nuclear pore complex is a massive structure that extends across the nuclear envelope, forming a gateway that regulates the flow of macromolecules between the nucleus and the cytoplasm. Nucleoporins are the main components of the nuclear pore complex in eukaryotic cells. The protein encoded by this gene is a membrane-spanning glycoprotein that is a major component of the nuclear pore complex.

Target: Nucleoporin 210 kDa / gp210 (NUP210)

Clonality: Polyclonal

Reactivity: Human

Tested Applications: ELISA, WB, IHC, FCM

Host: Rabbit

Recommended dilutions: WB: 1/2000, IHC-P: 1/500, FCM: 1/10 - 1/50. Not tested in IHC-F. Optimal dilutions/concentrations should be determined by the end user.

Datasheet

Version: 2.0.0
Revision date: 03 Feb 2025



Conjugation:	Unconjugated
Immunogen:	KLH-conjugated synthetic peptide between 202-231 amino acids from the N-terminal region of human NUP210.
Isotype:	IgG
Form:	Liquid
Purification:	Purified through a protein A column, followed by peptide affinity purification.
Storage:	Aliquot and store at -20°C. Avoid repeated freeze/thaw cycles.
UniProt Primary AC:	Q8TEM1 (UniProt , ExPASy)
Gene Symbol:	NUP210
KEGG:	hsa:23225
String:	9606.ENSP00000254508
Molecular Weight:	Calculated MW: 205 kDa
Buffer:	PBS containing 0.09% sodium azide.
Specificity:	Predicted to react with Mouse and Rat NUP210.
Note:	This product is for research use only.

For Reference Only