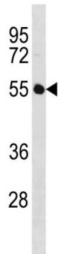


Immunoglobulin Superfamily Member 21 (IGSF21) Antibody

Catalogue No.: abx034717



IGSF21 (Immunoglobulin superfamily member 21) contains 2 Ig-like (immunoglobulin-like) domains.

Target:	Immunoglobulin Superfamily Member 21 (IGSF21)
Clonality:	Polyclonal
Reactivity:	Human
Tested Applications:	ELISA, WB
Host:	Rabbit
Recommended dilutions:	WB: 1/500 - 1/1000. Optimal dilutions/concentrations should be determined by the end user.
Conjugation:	Unconjugated
Immunogen:	KLH-conjugated synthetic peptide between 87-115 amino acids from the N-terminal region of human IGSF21.
Isotype:	IgG
Form:	Liquid
Purification:	Purified through a protein A column, followed by peptide affinity purification.
Storage:	Aliquot and store at -20°C. Avoid repeated freeze/thaw cycles.
UniProt Primary AC:	Q96ID5 (UniProt , ExPASy)
KEGG:	hsa:84966
String:	9606.ENSP00000251296

Datasheet

Version: 3.0.0
Revision date: 06 Feb 2025



Molecular Weight: Calculated MW: 51.8 kDa

Buffer: PBS containing 0.09% sodium azide.

Specificity: Predicted to react with Mouse and Rat IGSF21.

Note: This product is for research use only.

For Reference Only