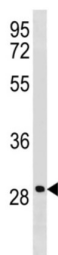


Leucine-Rich Repeat-Containing Protein 61 (LRRC61) Antibody

Catalogue No.: abx034734



LRRC61 contains two Leucine-rich repeat; these are short sequence motifs present in a number of proteins with diverse functions and cellular locations. These repeats are usually involved in protein-protein interactions. Each Leucine Rich Repeat is composed of a beta-alpha unit. These units form elongated non-globular structures. Leucine Rich Repeats are often flanked by cysteine rich domains.

Target:	Leucine-Rich Repeat-Containing Protein 61 (LRRC61)
Clonality:	Polyclonal
Reactivity:	Human
Tested Applications:	ELISA, WB
Host:	Rabbit
Recommended dilutions:	WB: 1/1000. Optimal dilutions/concentrations should be determined by the end user.
Conjugation:	Unconjugated
Immunogen:	KLH-conjugated synthetic peptide between 111-139 amino acids from the Central region of human LRRC61.
Isotype:	IgG
Form:	Liquid
Purification:	Purified through a protein A column, followed by peptide affinity purification.
Storage:	Aliquot and store at -20°C. Avoid repeated freeze/thaw cycles.
UniProt Primary AC:	Q9BV99 (UniProt , ExPASy)
String:	9606.ENSP00000352642

Datasheet

Version: 1.0.0

Revision date: 10 Mar 2025



Molecular Weight: Calculated MW: 28 kDa

Buffer: PBS containing 0.09% sodium azide.

Note: THIS PRODUCT IS FOR RESEARCH USE ONLY. NOT FOR USE IN DIAGNOSTIC, THERAPEUTIC OR COSMETIC PROCEDURES. NOT FOR HUMAN OR ANIMAL CONSUMPTION.

For Reference Only