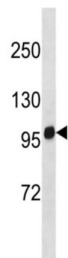


Breast Cancer Anti-Estrogen Resistance Protein 1 (Bcar1) Antibody

Catalogue No.: abx034763



Docking protein which plays a central coordinating role for tyrosine kinase-based signaling related to cell adhesion. Implicated in induction of cell migration (By similarity). Has been shown to be essential in cardiovascular development during embryogenesis.

Target:	Breast Cancer Anti-Estrogen Resistance Protein 1 (Bcar1)
Clonality:	Polyclonal
Reactivity:	Mouse
Tested Applications:	ELISA, WB
Host:	Rabbit
Recommended dilutions:	WB: 1/1000. Optimal dilutions/concentrations should be determined by the end user.
Conjugation:	Unconjugated
Immunogen:	KLH-conjugated synthetic peptide between 322-348 amino acids from the Central region of mouse Bcar1.
Isotype:	IgG
Form:	Liquid
Purification:	Purified through a protein A column, followed by peptide affinity purification.
Storage:	Aliquot and store at -20°C. Avoid repeated freeze/thaw cycles.
UniProt Primary AC:	Q61140 (UniProt , ExPASy)
KEGG:	mmu:12927

Datasheet

Version: 1.0.0
Revision date: 03 Dec 2024



String: [10090.ENSMUSP00000129584](#)

Molecular Weight: Calculated MW: 94.3 kDa

Buffer: PBS containing 0.09% sodium azide.

Specificity: Predicted to react with Rat Bcar1.

Note: This product is for research use only.

For Reference Only