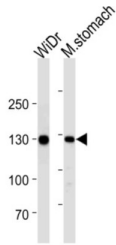


Cadherin-1 / E-Cadherin (CDH1) Antibody

Catalogue No.: abx034792



Cadherins are calcium-dependent cell adhesion proteins. They preferentially interact with themselves in a homophilic manner in connecting cells; cadherins may thus contribute to the sorting of heterogeneous cell types. CDH1 is involved in mechanisms regulating cell-cell adhesions, mobility and proliferation of epithelial cells. Has a potent invasive suppressor role. It is a ligand for integrin alpha-E/beta-7. E-Cad/CTF2 promotes non-amyloidogenic degradation of Abeta precursors. Has a strong inhibitory effect on APP C99 and C83 production.

Target:	Cadherin-1 / E-Cadherin (CDH1)
Clonality:	Monoclonal
Reactivity:	Human, Mouse
Tested Applications:	ELISA, WB, IHC
Host:	Mouse
Recommended dilutions:	WB: 1/4000, IHC-P: 1/25. Not tested in IHC-F. Optimal dilutions/concentrations should be determined by the end user.
Conjugation:	Unconjugated
Immunogen:	Purified His-tagged CDH1 protein
Isotype:	IgG ₁ , Kappa
Form:	Liquid
Purification:	Purified through a protein G column, eluted with high and low pH buffers and neutralized immediately, followed by dialysis against PBS.
Storage:	Aliquot and store at -20°C. Avoid repeated freeze/thaw cycles.
UniProt Primary AC:	P12830 (UniProt , ExPASy)

Datasheet

Version: 1.0.0
Revision date: 21 Nov 2024



NCBI Accession: NP_004351.1

KEGG: hsa:999

String: [9606.ENSP00000261769](#)

Molecular Weight: Calculated MW: 97.5 kDa

Buffer: PBS containing 0.09% sodium azide.

Note: This product is for research use only.

For Reference Only