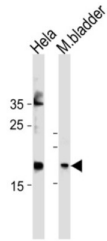


Protein Shisa-Like-2A (FAM159A) Antibody

Catalogue No.: abx034810



The exact function of this protein remains unknown.

Target:	Protein Shisa-Like-2A (FAM159A)
Clonality:	Polyclonal
Reactivity:	Human, Mouse
Tested Applications:	ELISA, WB, IF/ICC
Host:	Rabbit
Recommended dilutions:	WB: 1/1000, IF/ICC: 1/25. Optimal dilutions/concentrations should be determined by the end user.
Conjugation:	Unconjugated
Immunogen:	KLH-conjugated synthetic peptide between 89-115 amino acids from the Central region of human FAM159A.
Isotype:	IgG
Form:	Liquid
Purification:	Purified through a protein A column, followed by peptide affinity purification.
Storage:	Aliquot and store at -20°C. Avoid repeated freeze/thaw cycles.
UniProt Primary AC:	Q6UWV7 (UniProt , ExpASY)
NCBI Accession:	NP_001036158.1
KEGG:	hsa:348378

Datasheet

Version: 3.0.0
Revision date: 15 Nov 2024



String: [9606.ENSF00000429726](#)

Molecular Weight: Calculated MW: 20.3 kDa

Buffer: PBS containing 0.09% sodium azide.

Note: This product is for research use only.

For Reference Only