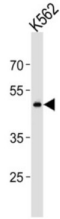


Probable G-Protein Coupled Receptor 150 (GPR150) Antibody

Catalogue No.: abx034888



Orphan receptor.

Target:	Probable G-Protein Coupled Receptor 150 (GPR150)
Clonality:	Polyclonal
Reactivity:	Human
Tested Applications:	ELISA, WB
Host:	Rabbit
Recommended dilutions:	WB: 1/1000. Optimal dilutions/concentrations should be determined by the end user.
Conjugation:	Unconjugated
Immunogen:	KLH-conjugated synthetic peptide between 366-395 amino acids from the C-terminal region of human GPR150.
Isotype:	IgG
Form:	Liquid
Purification:	Purified through a protein A column, followed by peptide affinity purification.
Storage:	Aliquot and store at -20°C. Avoid repeated freeze/thaw cycles.
UniProt Primary AC:	Q8NGU9 (UniProt , ExPASy)
Gene Symbol:	GPR150
NCBI Accession:	NP_954713.1

Datasheet

Version: 2.0.0

Revision date: 12 Jan 2025



KEGG: hsa:285601

String: [9606.ENSP00000369344](#)

Molecular Weight: Calculated MW: 46.4 kDa

Buffer: PBS containing 0.09% sodium azide.

Note: This product is for research use only.

For Reference Only