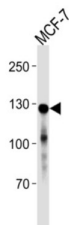


## Cadherin-1 / E-Cadherin (CDH1) Antibody

Catalogue No.: abx034894



Cadherins are calcium-dependent cell adhesion proteins. They preferentially interact with themselves in a homophilic manner in connecting cells; cadherins may thus contribute to the sorting of heterogeneous cell types. CDH1 is involved in mechanisms regulating cell-cell adhesions, mobility and proliferation of epithelial cells. Has a potent invasive suppressor role. It is a ligand for integrin alpha-E/beta-7. E-Cad/CTF2 promotes non-amyloidogenic degradation of Abeta precursors. Has a strong inhibitory effect on APP C99 and C83 production. This antibody is supplied as crude ascites.

<b>Target:</b>	Cadherin-1 / E-Cadherin (CDH1)
<b>Clonality:</b>	Monoclonal
<b>Reactivity:</b>	Human
<b>Tested Applications:</b>	ELISA, WB
<b>Host:</b>	Mouse
<b>Recommended dilutions:</b>	WB: 1/5000. Optimal dilutions/concentrations should be determined by the end user.
<b>Conjugation:</b>	Unconjugated
<b>Immunogen:</b>	Purified His-tagged Human CDH1 protein
<b>Isotype:</b>	IgG <sub>1</sub>
<b>Form:</b>	Liquid
<b>Purification:</b>	Unpurified crude ascites.
<b>Storage:</b>	Aliquot and store at -20°C. Avoid repeated freeze/thaw cycles.
<b>UniProt Primary AC:</b>	P12830 ( <a href="#">UniProt</a> , <a href="#">ExPASy</a> )

# Datasheet

Version: 2.0.0

Revision date: 30 Jan 2025



**NCBI Accession:** NP\_004351.1

**KEGG:** hsa:999

**String:** [9606.ENSP00000261769](#)

**Molecular Weight:** Calculated MW: 97.5 kDa

**Buffer:** Ascites containing 0.09% sodium azide.

**Note:** This product is for research use only.

For Reference Only