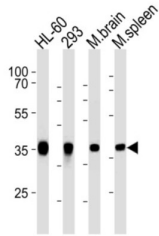


Aldolase C, Fructose Bisphosphate (ALDOC) Antibody

Catalogue No.: abx034908



ALDOC Antibody is a Mouse Monoclonal antibody against ALDOC.

Target:	Aldolase C, Fructose Bisphosphate (ALDOC)
Clonality:	Monoclonal
Reactivity:	Human, Mouse, Rat
Tested Applications:	ELISA, WB
Host:	Mouse
Recommended dilutions:	WB: 1/2000, FCM: 1/25. Optimal dilutions/concentrations should be determined by the end user.
Conjugation:	Unconjugated
Immunogen:	Purified His-tagged Human ALDOC protein
Isotype:	IgG ₃
Form:	Liquid
Purification:	Purified Mouse Monoclonal Antibody.
Storage:	Aliquot and store at -20°C. Avoid repeated freeze/thaw cycles.
UniProt Primary AC:	P09972 (UniProt , ExpASY)
NCBI Accession:	NP_005156.1
KEGG:	hsa:230

Datasheet

Version: 2.0.0

Revision date: 12 Mar 2025



String: [9606.ENSF00000226253](#)

Molecular Weight: Calculated MW: 39.5 kDa

Buffer: PBS containing 0.09% sodium azide.

Note: THIS PRODUCT IS FOR RESEARCH USE ONLY. NOT FOR USE IN DIAGNOSTIC, THERAPEUTIC OR COSMETIC PROCEDURES. NOT FOR HUMAN OR ANIMAL CONSUMPTION.

For Reference Only