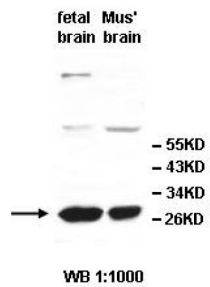
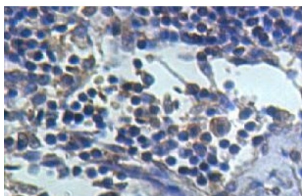


Ubiquitin Carboxyl Terminal Hydrolase L1 (UCHL1) Antibody

Catalogue No.: abx036026



Western blot analysis of fetal brain and mouse brain lysates, using UCHL1 antibody.



IHC analysis of formalin-fixed paraffin-embedded fetal lymphocyte, with cytoplasmic staining, using UCHL1 antibody (1/100 dilution).

Rabbit Polyclonal against the UCHL1 protein.

Target:	Ubiquitin Carboxyl Terminal Hydrolase L1 (UCHL1)
Clonality:	Polyclonal
Reactivity:	Human
Tested Applications:	ELISA, WB, IHC
Host:	Rabbit
Recommended dilutions:	ELISA: 1/20000 - 1/80000, WB: 1/500 - 1/2000, IHC: 1/100 - 1/200. Optimal dilutions/concentrations should be determined by the end user.
Conjugation:	Unconjugated
Immunogen:	Recombinant fragment corresponding to 10-214 AA of human UCHL1.
Isotype:	IgG
Form:	Lyophilized
Purification:	Purified by antigen affinity column chromatography.

Datasheet

Version: 2.0.0

Revision date: 12 Mar 2025



Reconstitution: Reconstitute in 100 µl of sterile distilled H₂O with 50% glycerol.

Storage: Store at -20 °C. Avoid repeated freeze/thaw cycles.

Buffer: Prior to lyophilization: 1% BSA and 0.02% NaN₃.

Specificity: Predicted to react with Mouse and Rat UCHL1.

Concentration: Lyophilized form: Not applicable.
After reconstitution: 1 mg/ml.

Note: THIS PRODUCT IS FOR RESEARCH USE ONLY. NOT FOR USE IN DIAGNOSTIC, THERAPEUTIC OR COSMETIC PROCEDURES. NOT FOR HUMAN OR ANIMAL CONSUMPTION.

For Reference Only