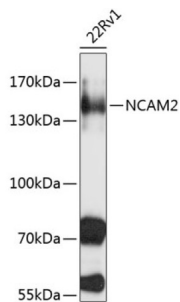


Neural Cell Adhesion Molecule 2 (NCAM2) Antibody

Catalogue No.: abx002910



Western blot analysis of extracts of 22Rv1 cells using NCAM2 Antibody (1/1000 dilution).

NCAM2 Antibody is a Rabbit Polyclonal antibody against NCAM2. The protein encoded by this gene belongs to the immunoglobulin superfamily. It is a type I membrane protein and may function in selective fasciculation and zone-to-zone projection of the primary olfactory axons.

Target:	Neural Cell Adhesion Molecule 2 (NCAM2)
Clonality:	Polyclonal
Reactivity:	Human, Mouse, Rat
Tested Applications:	WB
Host:	Rabbit
Recommended dilutions:	WB: 1/500 - 1/2000. Optimal dilutions/concentrations should be determined by the end user.
Conjugation:	Unconjugated
Immunogen:	Recombinant fusion protein corresponding to human NCAM2
Isotype:	IgG
Form:	Liquid
Purification:	Purified by affinity chromatography.
Storage:	Aliquot and store at -20°C. Avoid repeated freeze/thaw cycles.
UniProt Primary AC:	O15394 (UniProt , ExPASy)
Gene Symbol:	NCAM2

Datasheet

Version: 4.0.0
Revision date: 12 Mar 2025



GeneID: [4685](#)

NCBI Accession: NP_004531.2

KEGG: hsa:4685

String: [9606.ENSP00000383392](#)

Molecular Weight: Calculated MW: 47 kDa/93 kDa
Observed MW: 140 kDa

Buffer: PBS, pH 7.3, containing 0.02% sodium azide, 50% glycerol.

Concentration: 1 mg/ml

Note: THIS PRODUCT IS FOR RESEARCH USE ONLY. NOT FOR USE IN DIAGNOSTIC, THERAPEUTIC OR COSMETIC PROCEDURES. NOT FOR HUMAN OR ANIMAL CONSUMPTION.

For Reference Only