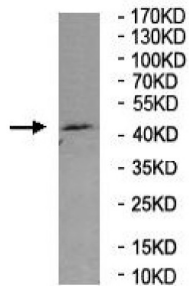
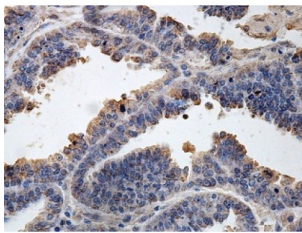


Apelin Receptor (APLNR) Antibody

Catalogue No.: abx036754



WB analysis of Human Brain tissue lysate, using APLNR antibody (1/500 dilution).



IHC-P analysis of ovarian cancer tissue showing membrane staining, using APLNR antibody (1/100 dilution).

Rabbit Polyclonal against the APLNR protein.

Target:	Apelin Receptor (APLNR)
Clonality:	Polyclonal
Reactivity:	Human
Tested Applications:	ELISA, WB, IHC
Host:	Rabbit
Recommended dilutions:	ELISA: 1/20000 - 1/80000, WB: 1/500 - 1/1000, IHC: 1/100 - 1/200. Optimal dilutions/concentrations should be determined by the end user.
Conjugation:	Unconjugated
Immunogen:	Recombinant fragment corresponding to 310-380 AA of human APLNR.
Isotype:	IgG
Form:	Lyophilized
Purification:	Purified by antigen affinity column chromatography.

Datasheet

Version: 3.0.0
Revision date: 03 Dec 2024



Reconstitution: Reconstitute in 100 µl of sterile distilled H₂O with 50% glycerol.

Storage: Store at -20 °C. Avoid repeated freeze/thaw cycles.

UniProt Primary AC: P35414 ([UniProt](#), [ExPASy](#))

Gene Symbol: APLNR

GeneID: [187](#)

OMIM: [600052](#)

NCBI Accession: BC032688

HGNC: 339

KEGG: hsa:187

Ensembl: ENSG00000134817

String: [9606.ENSP00000475344](#)

Molecular Weight: Observed MW: 43 kDa

Buffer: Prior to lyophilization: 1% BSA and 0.02% NaN₃.

Concentration: Lyophilized form: Not applicable.
After reconstitution: 1 mg/ml.

Note: This product is for research use only.

For Reference Only