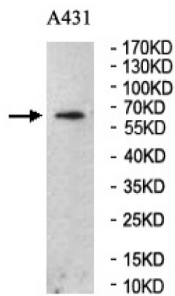
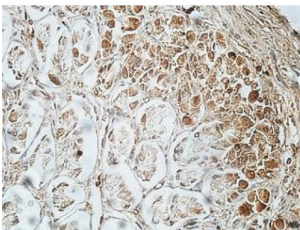


Fc Receptor-Like Protein 5 (FCRL5) Antibody

Catalogue No.: abx037099



WB analysis of A431 cell lysates, using FCRL5 antibody (1/200 dilution).



IHC-P analysis of fetal stomach tissue, with cytoplasmic and membrane staining, using FCRL5 antibody (1/100 dilution).

Rabbit Polyclonal against the FCRL5 protein.

Target:	Fc Receptor-Like Protein 5 (FCRL5)
Clonality:	Polyclonal
Reactivity:	Human
Tested Applications:	ELISA, WB, IHC
Host:	Rabbit
Recommended dilutions:	ELISA: 1/20000 - 1/80000, WB: 1/500 - 1/2000, IHC: 1/100 - 1/200. Optimal dilutions/concentrations should be determined by the end user.
Conjugation:	Unconjugated
Immunogen:	Recombinant fragment corresponding to 79-254 AA of human FCRL5.
Isotype:	IgG
Form:	Lyophilized
Purification:	Purified by antigen affinity column chromatography.

Datasheet

Version: 4.0.0

Revision date: 02 Feb 2025



Reconstitution: Reconstitute in 100 µl of sterile distilled H₂O with 50% glycerol.

Storage: Store at -20 °C. Avoid repeated freeze/thaw cycles.

Molecular Weight: Observed MW: 67 kDa

Buffer: Prior to lyophilization: 1% BSA and 0.02% NaN₃.

Specificity: Predicted to react with Mouse and Rat FCRL5.

Concentration: Lyophilized form: Not applicable.
After reconstitution: 1 mg/ml.

Note: This product is for research use only.

For Reference Only