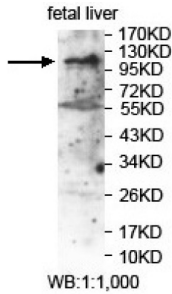
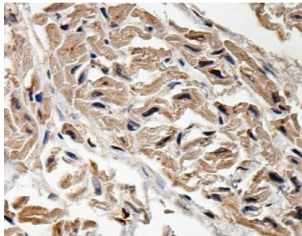


Leucine-Rich Repeats And Immunoglobulin-Like Domains Protein 2 (LRIG2) Antibody

Catalogue No.: abx037223



WB analysis of fetal liver lysate, using LRIG2 antibody (1/1000 dilution).



IHC-P analysis of fetal heart tissue, with cytoplasmic and membrane staining, using LRIG2 antibody (1/100 dilution).

Rabbit Polyclonal against the LRIG2 protein.

Target:	Leucine-Rich Repeats And Immunoglobulin-Like Domains Protein 2 (LRIG2)
Clonality:	Polyclonal
Reactivity:	Human
Tested Applications:	ELISA, WB, IHC
Host:	Rabbit
Recommended dilutions:	ELISA: 1/20000 - 1/80000, WB: 1/500 - 1/2000, IHC: 1/100 - 1/200. Optimal dilutions/concentrations should be determined by the end user.
Conjugation:	Unconjugated
Immunogen:	Recombinant fragment corresponding to 313-502 AA of human LRIG2.
Isotype:	IgG
Form:	Lyophilized

Datasheet

Version: 3.0.0
Revision date: 13 Mar 2025



Purification:	Purified by antigen affinity column chromatography.
Reconstitution:	Reconstitute in 100 µl of sterile distilled H ₂ O with 50% glycerol.
Storage:	Store at -20 °C. Avoid repeated freeze/thaw cycles.
Buffer:	Prior to lyophilization: 1% BSA and 0.02% NaN ₃ .
Specificity:	Predicted to react with Mouse and Rat LRIG2.
Concentration:	Lyophilized form: Not applicable. After reconstitution: 1 mg/ml.
Note:	THIS PRODUCT IS FOR RESEARCH USE ONLY. NOT FOR USE IN DIAGNOSTIC, THERAPEUTIC OR COSMETIC PROCEDURES. NOT FOR HUMAN OR ANIMAL CONSUMPTION.

For Reference Only