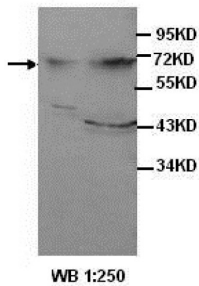
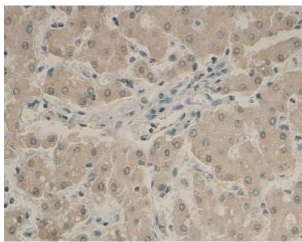


Alpha-Fetoprotein (AFP) Antibody

Catalogue No.: abx037404



Western blot analysis of HepG2 cell and human fetal liver lysates, using AFP antibody.



IHC analysis of formalin-fixed paraffin-embedded human liver with protein staining, using AFP antibody (1/100 dilution).

Rabbit Polyclonal against the AFP protein.

Target:	Alpha-Fetoprotein (AFP)
Clonality:	Polyclonal
Reactivity:	Human
Tested Applications:	ELISA, WB, IHC
Host:	Rabbit
Recommended dilutions:	ELISA: 1/20000 - 1/80000, WB: 1/500 - 1/2000, IHC: 1/100 - 1/200. Optimal dilutions/concentrations should be determined by the end user.
Conjugation:	Unconjugated
Immunogen:	A peptide corresponding to the middle region of human AFP protein.
Isotype:	IgG
Form:	Lyophilized
Purification:	Purified by antigen affinity column chromatography.

Datasheet

Version: 1.0.0

Revision date: 16 Feb 2025



Reconstitution: Reconstitute in 100 µl of sterile distilled H₂O with 50% glycerol.

Storage: Store at -20 °C. Avoid repeated freeze/thaw cycles.

NCBI Accession: NM_001134

Buffer: Prior to lyophilization: 1% BSA and 0.02% NaN₃.

Concentration: Lyophilized form: Not applicable.
After reconstitution: 1 mg/ml.

Note: This product is for research use only.

For Reference Only