

Datasheet

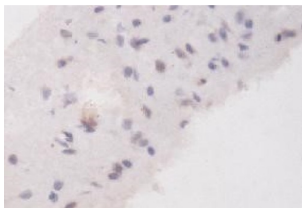
Version: 3.0.0
Revision date: 29 May 2024

AF4/FMR2 Family Member 2 (AFF2) Antibody

Catalogue No.: abx037411



Western blot analysis of fetal lung lysate using AF4/FMR2 Family Member 2 (AFF2) Antibody.



Immunohistochemistry analysis of paraffin-embedded fetal brain using AF4/FMR2 Family Member 2 (AFF2) Antibody.

AF4/FMR2 Family Member 2 (AFF2) Antibody is a rabbit polyclonal antibody against AFF2 protein.

Target:	AF4/FMR2 Family Member 2 (AFF2)
Clonality:	Polyclonal
Reactivity:	Human
Tested Applications:	ELISA, WB, IHC
Host:	Rabbit
Recommended dilutions:	ELISA: 1/20000 - 1/80000, WB: 1/500 - 1/2000, IHC: 1/100 - 1/200. Optimal dilutions/concentrations should be determined by the end user.
Conjugation:	Unconjugated
Immunogen:	A peptide corresponding to N-terminal region of human AFF2 protein.
Isotype:	IgG
Form:	Lyophilized
Purification:	Purified by antigen affinity column chromatography.

Datasheet

Version: 3.0.0

Revision date: 29 May 2024



Reconstitution: Reconstitute in 100 µl of sterile distilled H₂O with 50% glycerol.

Storage: Store at -20 °C. Avoid repeated freeze/thaw cycles.

NCBI Accession: NM_001169122.1

Molecular Weight: Observed MW: 170 kDa

Buffer: Prior to lyophilization: 1% BSA and 0.02% NaN₃.

Specificity: Predicted to cross-react with Rat and Mouse AFF2.

Concentration: Lyophilized form: Not applicable.
After reconstitution: 1 mg/ml.

Note: This product is for research use only.

For Reference Only